



# MINDSTORMS<sup>®</sup>

EV3



# User Guide

# TABLE OF CONTENTS



## Introduction

+ Welcome .....	3
+ How to Use This Guide .....	4
+ Help .....	5

## EV3 Technology

+ Overview .....	6
+ EV3 Brick .....	7
Overview .....	7
Installing Batteries .....	10
Turning On the EV3 Brick .....	11
+ EV3 Motors .....	12
Large Motor .....	12
Medium Motor .....	12
+ EV3 Sensors .....	13
Color Sensor .....	13
Touch Sensor .....	14
Infrared Sensor and Remote Infrared Beacon .....	15
+ Connecting Sensors and Motors .....	17
+ Connecting the EV3 Brick to Your Computer .....	18
USB Cable .....	18
Wireless—Bluetooth .....	19
Wireless—Wi-Fi .....	20
+ Connecting the EV3 Brick to Your Tablet .....	23
Making a Bluetooth Connection to Your iPad .....	23
Making a Bluetooth Connection to Your Android Tablet .....	24
+ EV3 Brick Interface .....	25
Run Recent .....	25
File Navigation .....	25
Brick Apps .....	26
Settings .....	30

## EV3 Software

+ Minimum System Requirements .....	34
+ Installing the Software .....	34
+ Lobby .....	35
+ Project Properties and Structure .....	36
+ Robot Missions .....	38
+ Programming .....	39
+ Programming Blocks and Palettes .....	40
+ Hardware Page .....	42
+ Content Editor .....	44
+ Tools .....	45

## EV3 Programmer App

+ Minimum System Requirements .....	47
+ Installing the Programmer App .....	47
+ Lobby .....	48
+ Robot Missions .....	49
+ Programming .....	50
+ Programming Blocks and Palettes .....	51
+ Hardware Page .....	52

## Troubleshooting

+ Updating the EV3 Software .....	53
+ Firmware Update .....	54
+ Resetting the EV3 Brick .....	55

## Useful Information

+ Sound File List .....	56
+ Image File List .....	61
+ Brick Program App—Assets List .....	65
+ Element List .....	66

# INTRODUCTION

## Welcome

### Welcome to the world of LEGO® MINDSTORMS®

In this LEGO® MINDSTORMS® EV3 robotics set you have all the elements you need to create and command thousands of LEGO robots.

If you have never built a LEGO MINDSTORMS robot before, we recommend that you start by building one of the five cool robot characters pictured on the EV3 packaging. In the Robot Missions inside the EV3 programming software and tablet-based Programmer App, you'll find building instructions and examples of how to program these robots. The robots have been created by LEGO MINDSTORMS designers to demonstrate some of the ways you can build and program with the LEGO MINDSTORMS EV3 robotics system. Before you know it, you'll be turning your own LEGO creations into live robots of every type and with many different kinds of behavior!

With LEGO MINDSTORMS EV3, building and programming your own robot has never been easier. Think of a robot and then build it. Use the motors and sensors to add behavior and movement. The software will guide you in bringing your robot to life.

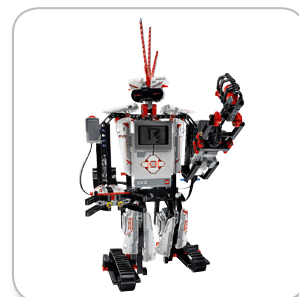
**Create:** Build your robot using the LEGO elements, motors, and intelligent sensors included in the set.

**Command:** Program your robot in the intuitive icon-based programming interface. Drag and drop the actions that you want into the programming window and adjust them to suit your robot's behavior.

**Go!** Once you have built and programmed your robot, it's time to play!

Visit [LEGO.com/mindstorms](http://LEGO.com/mindstorms) to see what's new and what others are doing with their LEGO MINDSTORMS set. When you and other LEGO MINDSTORMS fans share your creations and your experiences, we all benefit.

*See you there!*



# INTRODUCTION

## How to Use This Guide

In this guide, we'll tell you everything you need to know to get started with LEGO® MINDSTORMS® EV3 Technology. From the EV3 Brick, sensors, and motors, to the computer-based LEGO MINDSTORMS EV3 Software and tablet-edition EV3 Programmer App, this guide will have you creating, programming and playing with your own robots in no time!

### EV3 Technology

We start off by introducing you to the programmable intelligent EV3 Brick. Then we take you through the various motors and sensors that you can connect to the EV3 Brick to transform it into your very own robot, ready to perform any task. Next, we show you how to connect your EV3 Brick to a computer or tablet and then explain the various functions and settings available in the EV3 Brick Interface.

### EV3 Software

In the next chapter, we introduce you to the computer-based EV3 Software, including the installation process and various screens, tutorials, and tools.

### EV3 Programmer App

Next, we introduce you to the various features and functions of the tablet-based EV3 Programmer App.

### Troubleshooting

In this chapter, we show you how to keep your EV3 technology in top shape, from updating your firmware and software to resetting your EV3 Brick.

### Useful Information

In the final chapter, we list all the fun sounds and images that you can incorporate into your programs, either via the EV3 Software and EV3 Programmer App or directly from the EV3 Brick Interface. Lastly, we've included a visual overview of every LEGO element you get with your LEGO MINDSTORMS EV3 set.

### Notes

Look out for the special hexagon-shaped notes placed throughout this guide. They include handy hints, tips, warnings, and anything else we think you need to know to get you off to the best possible start.

# INTRODUCTION

## Help

### EV3 Software Help

The EV3 Software includes comprehensive, structured help documentation, as well as context-sensitive information about objects that you select within the application. Access the EV3 Software Help and Context Help under the EV3 Software Help menu. This is the first place to look if you need help or more information on how to use the EV3 Software.

The EV3 Software Help explains how to best use and program with the sensors and motors included in the LEGO® MINDSTORMS® EV3 set. This information is useful, whether you are using the EV3 Software or the EV3 Programmer App.

The EV3 Software Lobby also includes a series of Quick Start videos that introduce the main features of the EV3 Software.

### EV3 Programmer Help

The EV3 Programmer App Help documentation will help you understand the various icons, buttons, and areas found within the app. Context-sensitive help is also available wherever you see a question mark icon, like when you're setting programming block modes and parameters. We've also included a Quick Start Video tutorial that shows you how to connect your EV3 Brick to your tablet, navigate the various programming blocks, create a basic program, and then run it on your EV3 Brick.

If you want to know even more, such as how to use the various sensors and motors, then check out the EV3 Software Help.

### **NOTE:**

Some of the program examples in the EV3 Software Help include programming blocks that are not available in the EV3 Programmer App.

# EV3 TECHNOLOGY

## Overview

### Large Motor

- + Lets you program precise and powerful robotic action.



### EV3 Brick

- + Serves as the control center and power station for your robot.



### Touch Sensor

- + Recognizes three conditions: touched, bumped, and released.



### Color Sensor

- + Recognizes seven different colors and measures light intensity.



### Medium Motor

- + Maintains precision, while trading some power for compact size and faster response.



### Remote Infrared Beacon

- + Remote controls your robot from a distance.



### Infrared Sensor

- + Detects objects and can track and find the Remote Infrared Beacon.



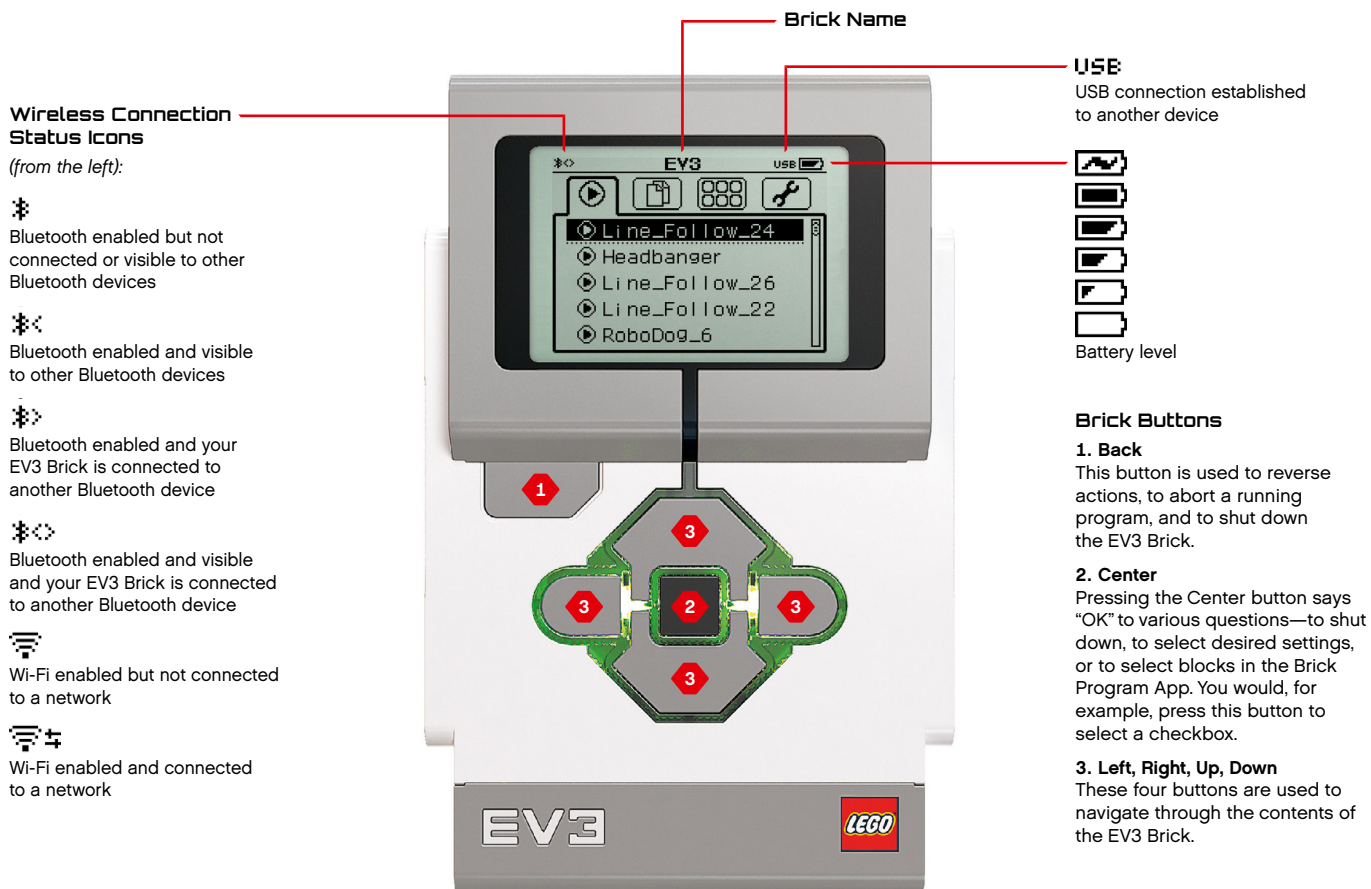
# EV3 TECHNOLOGY

## EV3 Brick

### Overview

The **Display** shows you what is going on inside the EV3 Brick and enables you to use the Brick Interface. It also allows you to add text and numerical or graphic responses into your programming or experiments. For example, you might want to program the Display to show a happy face (or a sad face) for a comparison response or to display a number that is the result of a mathematical calculation (learn more about using the **Display Block** in the EV3 Software Help).

The **Brick Buttons** allow you to navigate inside the EV3 Brick Interface. They can also be used as programmable activators. For example, you might program a robot to raise its arms if the Up button is pressed or to lower them if the Down button is pressed (for more information, see **Using the Brick Buttons** in the EV3 Software Help).



# EV3 TECHNOLOGY

## EV3 Brick

The **Brick Status Light** that surrounds the Brick Buttons tells you the current status of the EV3 Brick. It can be green, orange, or red, and can pulse. Brick Status Light codes are the following:

- + Red = Startup, Updating, Shutdown
- + Red pulsing = Busy
- + Orange = Alert, Ready
- + Orange pulsing = Alert, Running
- + Green = Ready
- + Green pulsing = Running program

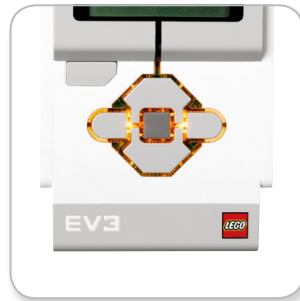
You can also program the Brick Status Light to show different colors and to pulse when different conditions are met (learn more about using the **Brick Status Light Block** in the EV3 Software Help).

### Technical Specifications for the EV3 Brick

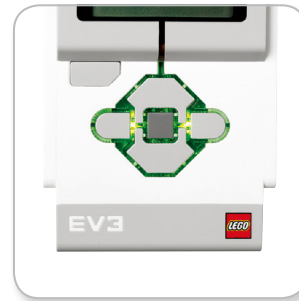
- + Operating System—LINUX
- + 300 MHz ARM9 Controller
- + Flash Memory—16 MB
  - + RAM—64 MB
- + Brick Screen Resolution—178x128/Black & White
- + USB 2.0 Communication to Host PC—Up to 480 Mbit/sec
- + USB 1.1 Host Communication—Up to 12 Mbit/sec
- + Micro SD Card—Supports SDHC, Version 2.0, Max 32 GB
- + Motor and Sensor Ports
- + Connectors—RJ12
- + Support Auto ID
- + Power—6 AA batteries



Brick Status Light – Red



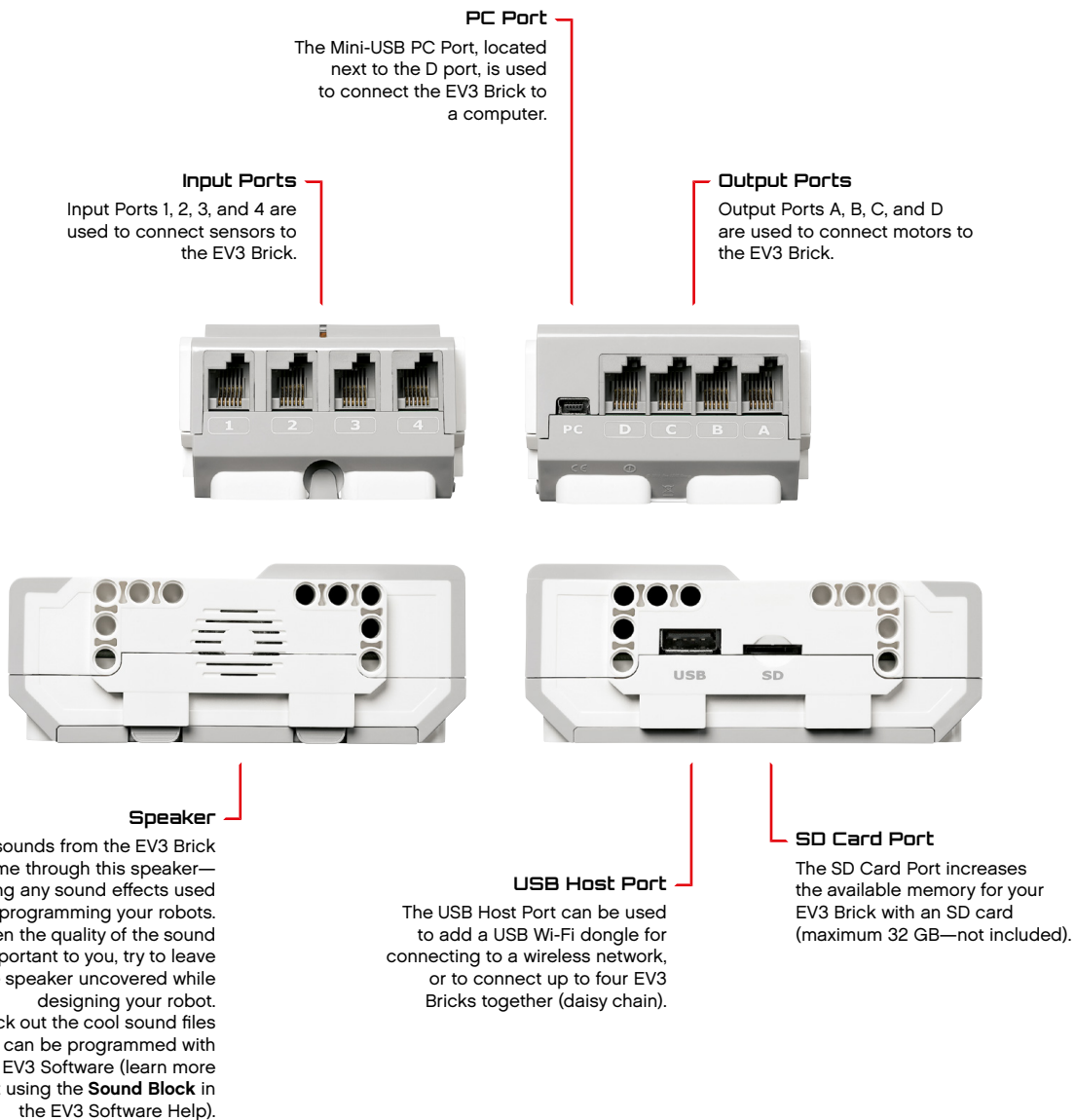
Brick Status Light – Orange



Brick Status Light – Green

# EV3 TECHNOLOGY

## EV3 Brick



# EV3 TECHNOLOGY

## EV3 Brick

### Installing Batteries in the EV3 Brick

The EV3 Brick requires six **AA/LR6 batteries**. Alkaline or rechargeable Lithium Ion AA batteries are recommended.

To install the AA batteries, remove the battery cover on the back of the EV3 Brick by pressing the two plastic tabs on the side. After you have inserted the six AA batteries, attach the battery cover again.

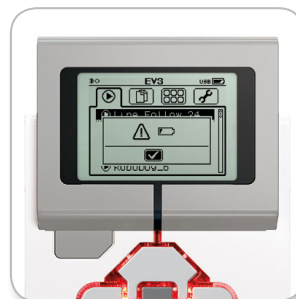
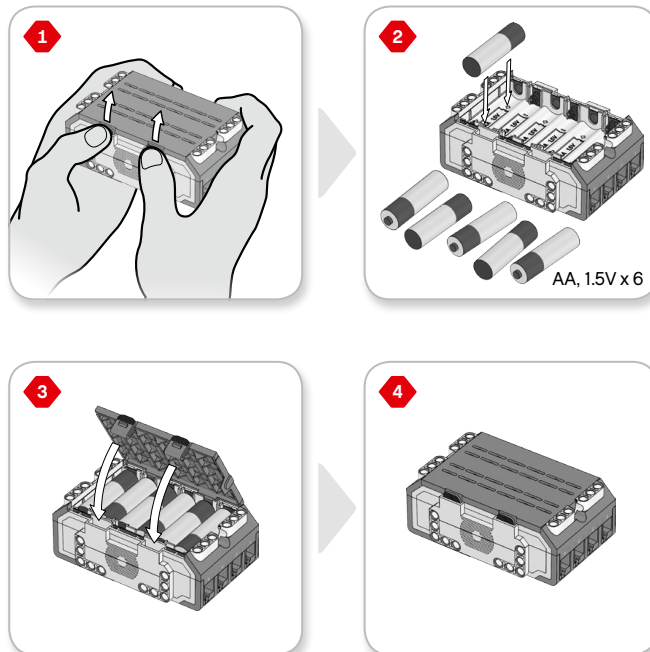
#### Some important information about batteries:

- + Never use different kinds of batteries together (including mixing old and new).
- + Remove batteries from the EV3 Brick when not in use.
- + Never use damaged batteries.
- + Use the correct battery charger under the supervision of an adult.
- + Never attempt to recharge batteries that are not rechargeable.

**Note:** *If your batteries are weak, the Brick Status Light may stay red after you press the Start button, while the Display continues to say "Starting."*

#### Power-Saving Practices

- + Remove the batteries between use.  
Remember to keep each set of batteries in its own storage container so they can be used together.
- + Reduce the volume.
- + Adjust the Sleep Setting.
- + Turn off Bluetooth and Wi-Fi when not in use.
- + Avoid unnecessary wear on the motors.



Low Battery Power Indicator

## EV3 Brick

### Turning On the EV3 Brick

To turn on the EV3 Brick, press the Center button. After you press the button, the Brick Status Light will turn red and the Starting screen will be displayed.

When the light changes to green, your EV3 Brick is ready.

To turn the EV3 Brick off, press the Back button until you see the Shut Down screen.

The Abort X will already be selected. Use the Right button to select the Accept check mark, then press the Center button for OK. Your EV3 Brick is now turned off. If you press OK while the X is selected, you will return to the Run Recent screen.



Starting screen



Shut Down screen

# EV3 TECHNOLOGY

## EV3 Motors

### Large Motor

The Large Motor is a powerful “smart” motor. It has a built-in Rotation Sensor with 1-degree resolution for precise control. The Large Motor is optimized to be the driving base on your robots.

By using the Move Steering or Move Tank programming block, the Large Motors will coordinate the action simultaneously.

### Medium Motor

The Medium Motor also includes a built-in Rotation Sensor (with 1-degree resolution), but it is smaller and lighter than the Large Motor. That means it is able to respond more quickly than the Large Motor.

The Medium Motor can be programmed to turn on or off, control its power level, or to run for a specified amount of time or rotations.

### Compare the Two Motors:

- + The Large Motor runs at 160–170 rpm, with a running torque of 20 Ncm and a stall torque of 40 Ncm (slower, but stronger).
- + The Medium Motor runs at 240–250 rpm, with a running torque of 8 Ncm and a stall torque of 12 Ncm (faster, but less powerful).
- + Both motors are Auto ID supported.

For more information on using the Rotation Sensor in your programming, see **Using the Motor Rotation Sensor** in the EV3 Software Help.



# EV3 TECHNOLOGY

## EV3 Sensors

### Color Sensor

The Color Sensor is a digital sensor that can detect the color or intensity of light that enters the small window on the face of the sensor. This sensor can be used in three different modes: Color Mode, Reflected Light Intensity Mode, and Ambient Light Intensity Mode.

In **Color Mode**, the Color Sensor recognizes seven colors—black, blue, green, yellow, red, white, and brown—plus No Color. This ability to differentiate between colors means your robot might be programmed to sort colored balls or blocks, speak the names of colors as they are detected, or stop action when it sees red.

In **Reflected Light Intensity Mode**, the Color Sensor measures the intensity of light reflected back from a red light-emitting lamp. The sensor uses a scale of 0 (very dark) to 100 (very light). This means your robot might be programmed to move around on a white surface until a black line is detected, or to interpret a color-coded identification card.

In **Ambient Light Intensity Mode**, the Color Sensor measures the strength of light that enters the window from its environment, such as sunlight or the beam of a flashlight. The sensor uses a scale of 0 (very dark) to 100 (very light). This means your robot might be programmed to set off an alarm when the sun rises in the morning, or stop action if the lights go out.

The sample rate of the Color Sensor is 1 kHz.

For the best accuracy, when in Color Mode or Reflected Light Intensity Mode, the sensor must be held at a right angle, close to—but not touching—the surface it is examining.

For more information, see **Using the Color Sensor** in the EV3 Software Help.



# EV3 TECHNOLOGY

## EV3 Sensors

### Touch Sensor

The Touch Sensor is an analog sensor that can detect when the sensor's red button has been pressed and when it is released. That means the Touch Sensor can be programmed to action using three conditions—pressed, released, or bumped (both pressed and released).

Using input from the Touch Sensor, a robot can be programmed to see the world as a blind person might, reaching a hand out and responding when it touches something (pressed).

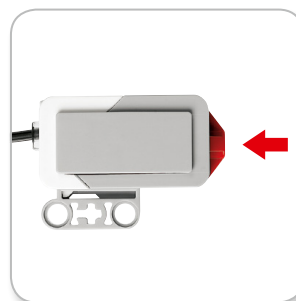
You might build a robot with a Touch Sensor pressed against the surface beneath it. You might then program the robot to respond (Stop!) when it is about to drive off the edge of a table (when the sensor is released).

A fighting robot might be programmed to keep pushing forward against its challenger until the challenger retreats. That pair of actions—pressed, then released—would constitute bumped.

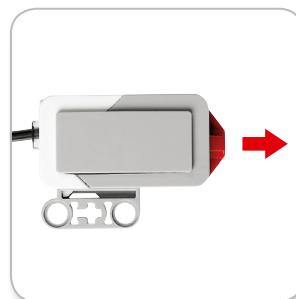
For more information, see **Using the Touch Sensor** in the EV3 Software Help.



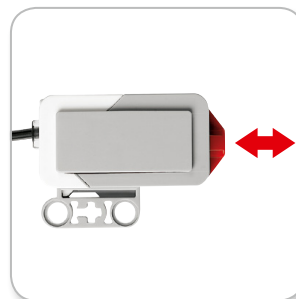
Touch Sensor



Pressed



Released



Bumped

# EV3 TECHNOLOGY

## EV3 Sensors

### Infrared Sensor and Remote Infrared Beacon

The Infrared Sensor is a digital sensor that can detect infrared light reflected from solid objects. It can also detect infrared light signals sent from the Remote Infrared Beacon.

The Infrared Sensor can be used in three different modes: Proximity Mode, Beacon Mode, and Remote Mode.

#### Proximity Mode

In Proximity Mode, the Infrared Sensor uses the light waves reflected back from an object to estimate the distance between the sensor and that object. It reports the distance using values between 0 (very close) to 100 (far away), not as a specific number of centimeters or inches. The sensor can detect objects up to 70 cm away, depending on the size and shape of the object.

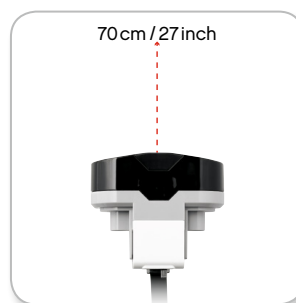
For more information, see **Using the Infrared Sensor Proximity Mode** in the EV3 Software Help.

#### Beacon Mode

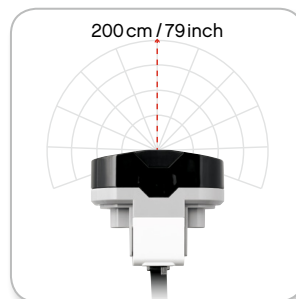
Choose one of the Remote Infrared Beacon's four channels from the red Channel Selector. The Infrared Sensor will detect a beacon signal matching the channel that you specify in your program up to a distance of approximately 200 cm in the direction it is facing.

Once detected, the sensor can estimate the general direction (heading) of and the distance (proximity) to the beacon. With this information, you can program a robot to play hide-and-seek, using the Remote Infrared Beacon as the target of its search. The heading will be a value of between -25 and 25, with 0 indicating that the beacon is directly in front of the Infrared Sensor. The proximity will be values between 0 and 100.

For more information, see **Using the Infrared Sensor Beacon Mode** in the EV3 Software Help.



Proximity Mode



Beacon Mode

# EV3 TECHNOLOGY

## EV3 Sensors

The Remote Infrared Beacon is a separate device that can be handheld or built into another LEGO® model. It requires two AAA alkaline batteries. To turn the Remote Infrared Beacon on, press the big Beacon Mode button on the top of the device. A green LED Indicator will turn on, indicating the device is active and transmitting continuously. Another press on the Beacon Mode button will turn it off (after one hour of inactivity, the beacon will automatically turn itself off).

### Remote Mode

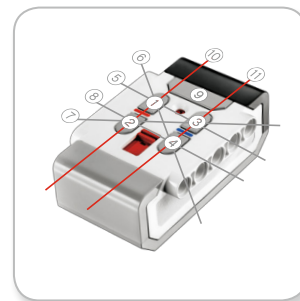
You can also use the Remote Infrared Beacon as a remote control for your robot. When in Remote Mode, the Infrared Sensor can detect which button (or combination of buttons) on the beacon is pressed. There are a total of eleven possible button combinations:

- 0 = No button (and Beacon Mode is off)
- 1 = Button 1
- 2 = Button 2
- 3 = Button 3
- 4 = Button 4
- 5 = Both Button 1 and Button 3
- 6 = Both Button 1 and Button 4
- 7 = Both Button 2 and Button 3
- 8 = Both Button 2 and Button 4
- 9 = Beacon Mode is on
- 10 = Both Button 1 and Button 2
- 11 = Both Button 3 and Button 4

For more information, see **Using the Infrared Sensor Remote Mode** in the EV3 Software Help.



Remote Infrared  
Beacon



Remote Mode

## Connecting Sensors and Motors

In order to function, motors and sensors must be connected to the EV3 Brick.

Using the flat black Connector Cables, link sensors to the EV3 Brick using Input Ports 1, 2, 3, and 4.

If you create programs while your EV3 Brick is disconnected from your device, the software will assign sensors to the following default ports:

- + Port 1: Touch Sensor
- + Port 2: No sensor
- + Port 3: Color Sensor
- + Port 4: Infrared Sensor

If the EV3 Brick is connected to your device while you program, the EV3 Software/Programmer App will automatically identify which port is being used for each sensor and motor.

Using the flat black Connector Cables, link motors to the EV3 Brick using Output Ports A, B, C, and D.

As with the sensors, if the EV3 Brick is not connected when you are writing a program, each motor will be assigned to the following default ports:

- + Port A: Medium Motor
- + Port B and C: Two Large Motors
- + Port D: Large Motor

If the EV3 Brick is connected to your device while you are programming, the EV3 Software/Programmer App will automatically assign the correct port in your programs.



Connecting Sensors



Connecting Motors

### **NOTE:**

The software cannot distinguish between two or more identical sensors or motors.

## Connecting the EV3 Brick to Your Computer

Connect the EV3 Brick to your computer by USB Cable or wirelessly using either Bluetooth or Wi-Fi.

### USB Cable

Using the USB Cable, plug the Mini-USB end into the EV3 Brick's PC Port (located next to Port D). Plug the USB end into your computer.



USB Cable connection

## Connecting the EV3 Brick to Your Computer

### Wireless—Bluetooth

If your computer is not Bluetooth enabled, you will need a Bluetooth USB dongle for your computer.

#### Making a Bluetooth Connection to the Computer

Before you can make a Bluetooth connection between the EV3 Brick and the computer running the EV3 Software, you will need to enable Bluetooth on the EV3 Brick. Directions for this can be found on page 31.

Once you have enabled Bluetooth on the EV3 Brick, it can now be connected to the computer and EV3 Software.

1. First, confirm that the EV3 Brick is turned on.
2. Open a new or existing program in the EV3 Software (see the **EV3 Software** chapter on page 35 for directions on how to do this).
3. Go to the Hardware Page at the lower right of the screen—expand the window if collapsed (learn more about the Hardware Page on page 42).
4. Click on the Available Bricks tab. If your EV3 Brick is not already listed, click the Refresh button to locate the EV3 Brick and check the Bluetooth box that will appear.
5. Accept the connection on your EV3 Brick manually, then enter the passkey and press the Center button for OK. The default is 1234. Repeat this in the EV3 Software.
6. The connection is now established and a “<>” symbol is shown on the top left of the EV3 Brick Display (next to the Bluetooth icon) to confirm the connection.

To disconnect the EV3 Brick from the computer, click on the Disconnect button next to the Refresh button in the Hardware Page.

More information about Bluetooth settings on the EV3 Brick can be found on page 31.



Wireless connection

## Connecting the EV3 Brick to Your Computer

### Wireless—Wi-Fi

Your first step in connecting to Wi-Fi is to acquire a Wi-Fi USB dongle. For a list of compatible dongles, go to the official LEGO® MINDSTORMS® website ([www.LEGO.com/mindstorms](http://www.LEGO.com/mindstorms)).

To begin the setup, you must have access to a wireless network, and know the network's name and its password.

If the EV3 Software is open, close it and insert your Wi-Fi dongle into the EV3 Brick using the USB Host Port.

Before you can connect the EV3 Brick to a network, you will need to enable Wi-Fi on the EV3 Brick. Directions for this can be found on page 33.



Settings screen

### **NOTE:**

The EV3 Brick only supports the following network encryption modes: None and WPA2.

### **NOTE:**

Because of keyboard limitations, the password for the network must be made up of numbers, capital letters, and lowercase letters. You will not be able to use some symbols, such as the # sign, or letters and symbols from non-Latin alphabets.

## Connecting the EV3 Brick to Your Computer

### Connecting the EV3 Brick to a network

After selecting Wi-Fi on the Settings screen, use the Up and Down buttons to select Connections and press the Center button for OK. The EV3 Brick will now search for and list available Wi-Fi networks.

Using the Up and Down buttons for navigation, find your network on the list. If the EV3 Brick is not already connected to your network (indicated by a check mark), select your network using the Center button.

In the Network dialog box that appears, select Connect and press OK with the Center button. You will now be asked to enter the encryption type and the network password using the Left, Right, Up, and Down buttons to navigate (upper and lower cases do matter here).

Once you have entered the correct password, press the check mark for OK. You will now be connected to the network.

If the EV3 Brick does not find your network in its search, the network may be hidden. To connect to a hidden network, select "Add hidden."

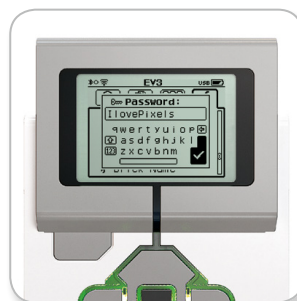
You will then be asked to enter the name, encryption type, and password for the hidden network you wish to add (upper and lower cases do matter here). Once done, the EV3 Brick will be connected to the hidden network and the network will be included in the network list.



Network list



Connect to network



Network password



Add hidden network

### NOTE:

Once you have connected to a network using its password, your EV3 Brick will remember the password for future connections. Known networks are indicated in the list with an asterisk "\*" symbol.

## Connecting the EV3 Brick to Your Computer

### Making a Wi-Fi Connection from the Computer to the EV3 Brick

Using the USB Cable, connect the EV3 Brick to the computer.

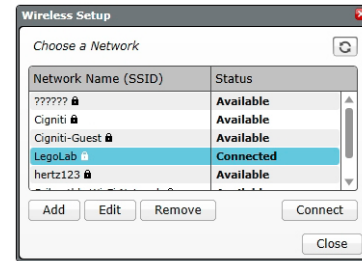
Open an EV3 Software program. Access the Wireless Setup tool in the Hardware Window (at the bottom right of the screen), or select Wireless Setup from the Tools Menu.

The computer will display which networks it detects.

Select the network you want to connect to and click on “Connect” to configure the connection. To add a network that is not broadcasting its Network Name (SSID), click “Add.”

To edit the settings of a previously configured network, click “Edit.”

Click “OK” to establish a Wi-Fi connection. Once the connection is established, you can unplug the USB Cable.



Wireless Setup tool

## Connecting the EV3 Brick to Your Tablet

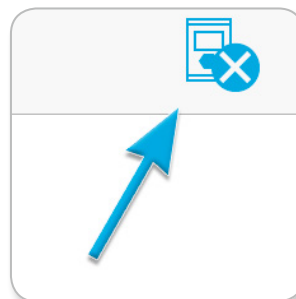
### Making a Bluetooth Connection to Your iPad

To download and run programs that you create in the EV3 Programmer App, connect your iPad to your EV3 Brick via Bluetooth using the following steps (to view an animation of the connection process, watch the Quick Start Video in the Help section of the EV3 Programmer App Lobby Menu):

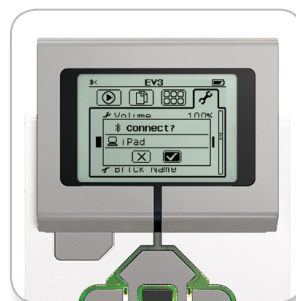
1. Confirm that your EV3 Brick is turned on.
2. Enable Bluetooth on your EV3 Brick and enable the iPhone/iPad/iPod setting (see page 31 for further details).
3. Make sure Bluetooth is enabled on your iPad.
4. Open a new or existing program in the EV3 Programmer App.
5. Tap the No Device Connected icon at the top right corner.
6. Tap the “Connect” button.
7. Select the EV3 Brick you want to connect to from the list of available bricks.
8. Accept the connection on your EV3 Brick manually, then enter the passkey and press the Center button for OK. The default is 1234. Enter the same passkey in the EV3 Programmer App.
9. The connection is now established and a “<>” symbol is shown in the top left of the EV3 Brick Display (next to the Bluetooth icon) to confirm the connection.

To disconnect your EV3 Brick from your iPad, go to the Hardware Page and tap the “Disconnect” button. See page 52 for further details.

You can find out more about your EV3 Brick’s Bluetooth settings on page 31.



No Device Connected icon



Accept the connection on your EV3 Brick

### NOTE:

For a full list of supported devices go to:  
[www.LEGO.com/mindstormsapps](http://www.LEGO.com/mindstormsapps)

## Connecting the EV3 Brick to Your Tablet

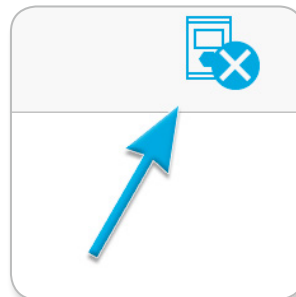
### Making a Bluetooth Connection to Your Android Tablet

To download and run programs that you create in the EV3 Programmer App on an Android tablet, connect your tablet to your EV3 Brick via Bluetooth using the following steps (to view an animation of the connection process, watch the Quick Start Video in the Help section of the EV3 Programmer App Lobby Menu):

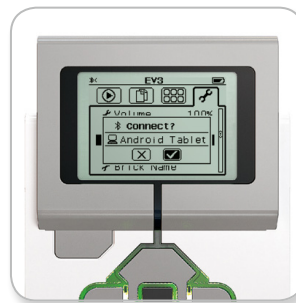
1. Confirm that your EV3 Brick is turned on.
2. Enable Bluetooth on your EV3 Brick and ensure the iPhone/iPad/iPod setting is unchecked (see page 31 for further details).
3. Make sure Bluetooth is enabled on your tablet.
4. Open a new or existing program in the EV3 Programmer App.
5. Tap the No Device Connected icon at the top right corner.
6. Tap the "Connect" button.
7. Select the EV3 Brick you want to connect to from the list of available bricks.
8. Accept the connection on your EV3 Brick manually, then enter the passkey and press the Center button for OK. The default is 1234. Enter the same passkey in the EV3 Programmer App.
9. The connection is now established and a "<>" symbol is shown in the top left of the EV3 Brick Display (next to the Bluetooth icon) to confirm the connection.

To disconnect your EV3 Brick from your Android tablet, go to the Hardware Page and tap the "Disconnect" button. See page 52 for further details.

You can find out more about your EV3 Brick's Bluetooth settings on page 31.



No Device Connected icon



Accept the connection on your EV3 Brick

### **NOTE:**

For a full list of supported devices go to:  
[www.LEGO.com/mindstormsapps](http://www.LEGO.com/mindstormsapps)

# EV3 TECHNOLOGY

## EV3 Brick Interface

The EV3 Brick is the control center for bringing your robots to life. Using the Display and the Brick Buttons, the EV3 Brick Interface contains four basic screens that give you access to an amazing array of functions unique to the EV3 Brick. It can be something as simple as starting and stopping a program, or something as complicated as writing the program itself.

### Run Recent

This screen will be blank until you begin to download and run programs. The most recently run programs will be displayed on this screen. The program at the top of the list that is selected by default is the latest program run.

### File Navigation

This screen is where you will access and manage all the files on your EV3 Brick, including files stored on an SD card.

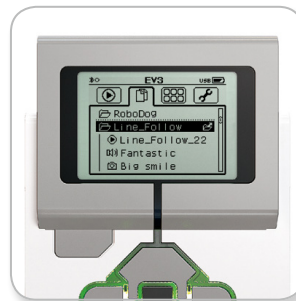
Files are organized in Project folders, which, in addition to the actual program files, also contain sounds and images used in each project. In the File Navigator, files can be moved or deleted. Programs created using the Brick Program app are stored separately in the BrkProg\_SAVE folder.



Run Recent screen



File Navigation screen



Open folder in File Navigation

## EV3 Brick Interface

### Brick Apps

The EV3 Brick comes with four brick applications preinstalled and ready to use. In addition, you can also make your own apps in the EV3 Software. Once downloaded to the EV3 Brick, the homemade apps will be displayed here.

The four preinstalled apps are the following:

#### Port View

On the first screen in the Port View, you will see, at a glance, which ports have sensors or motors attached. Use the EV3 Brick Buttons to navigate to one of the occupied ports and you will see the current readings returned from the sensor or motor. Attach some sensors and motors and experiment with the different settings. Press the Center button to see or change the current settings for the attached motors and sensors. Press the Back button to get back to the Brick Apps main screen.

#### Motor Control

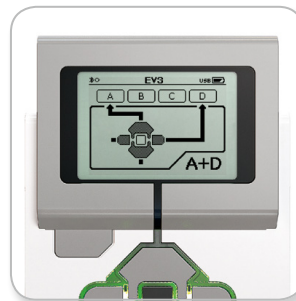
Control the forward and reverse movement of any motor connected to one of the four output ports. There are two different modes. In one mode, you will be able to control motors connected to Port A (using the Up and Down buttons) and to Port D (using the Left and Right buttons). In the other mode, it is motors connected to Port B (using the Up and Down buttons) and Port C (using the Left and Right buttons) that you control. Use the Center button to toggle between the two modes. Press the Back button to get back to the Brick Apps main screen.



Brick Apps screen



Port View app



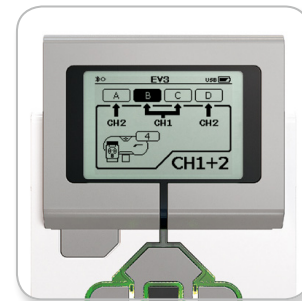
Motor Control app

# EV3 TECHNOLOGY

## EV3 Brick Interface

### IR Control

Control the forward and reverse motion of any motor connected to one of the four output ports using the Remote Infrared Beacon as remote control and the Infrared Sensor as receiver (the Infrared Sensor must be connected to Port 4 in the EV3 Brick). There are two different modes. In one mode, you will be using Channels 1 and 2 on the Remote Infrared Beacon. On Channel 1, you will be able to control motors connected to Port B (using Buttons 1 and 2 on the Remote Infrared Beacon) and to Port C (using Buttons 3 and 4 on the Remote Infrared Beacon). On Channel 2, you will be able to control motors connected to Port A (using Buttons 1 and 2) and to Port D (using Buttons 3 and 4). In the other mode, you can control your motors in the exact same way by using Channels 3 and 4 on the Remote Infrared Beacon instead. Use the Center button to toggle between the two modes. Press the Back button to get back to the Brick Apps main screen.



IR Control app

## EV3 Brick Interface

### Brick Program

Your EV3 Brick comes with an on-brick programming application similar to the Programming Canvas in the EV3 Software and EV3 Programmer App. These instructions tell you everything you'll need to know to get started.

### Create a Program

Open up your Brick Program App.

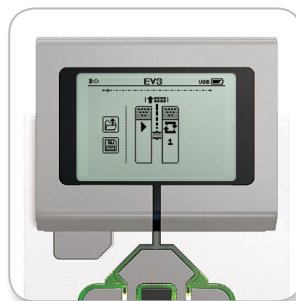
The Start screen provides you with a Start and a Loop block that are connected via a Sequence Wire. The vertical broken Add Block line in the middle indicates that you can add more blocks to your program. Press the Up button to add a new block from the Block Palette.

In the Block Palette, you can choose which new block to add by navigating using the Left, Right, Up, and Down buttons. Navigating farther up, additional blocks will show. Navigating all the way down will take you back to your program. Generally, there are two types of blocks—Action and Wait. The Action Block Indicator is a small arrow at the top right on the block. The Wait Block Indicator is a small hourglass. In total, there are six different Action blocks and eleven different Wait blocks to choose from.

When you find the block you want, navigate to it and press the Center button. You will be taken back to your program.

In your program, you can navigate between the blocks using the Left and Right buttons. Press the Center button to change the settings of the highlighted block (always the block in the middle of the screen) or to add a new block when the Sequence Wire is highlighted and the Add Block line is visible.

On each programming block, you can change one setting using the Up and Down buttons. For example, on the Action Move Steering block, you can change the direction of your robot's path. When you have chosen the setting you want, press the Center button.



Start screen



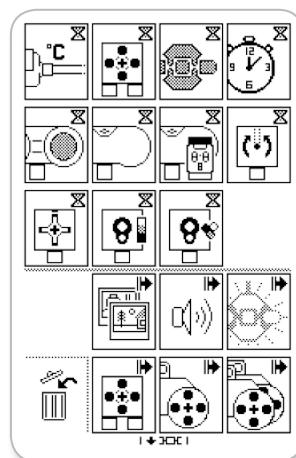
Block Palette



New block added



Adjust block setting



Full Block Palette

## EV3 Brick Interface

### Delete Blocks

If you want to delete a block from a program, highlight the block you want to delete and press the Up button to go to the Block Palette.

In the Block Palette, navigate to the trashcan on the far left and press the Center button. The block is now deleted.

### Run Program

To run your program, use the Left button to navigate to the Start block at the very beginning of the program. Press the Center button and your program will run.

### Save and Open Program

To save your program, navigate to the Save icon on the far left of your program. When clicking on the Save icon, you will be asked to name your program or accept the default name. Once you are done, click OK and your program is now saved in the BrkProg\_SAVE folder that can be accessed from the File Navigation screen (see page 25).

You can also open any existing EV3 Brick Program by clicking on the Open icon located above the Save icon. Use the Up and Down buttons to toggle between those two icons.



Delete block



Run program



Save program

## EV3 Brick Interface

### Settings

This screen will enable you to see and adjust various general settings on the EV3 Brick.

### Volume

There may be occasions when you will want to adjust the volume of the sound coming from the EV3 Brick Speaker. To change the speaker volume, go to the Settings screen. As the top menu, Volume will already be highlighted. Press the Center button.

Use the Right and Left buttons to change the volume setting, which can be intervals from 0% to 100%. Press the Center button to accept. This will return you to the Settings screen.

### Sleep

To change the amount of inactive time that passes before the EV3 Brick goes into Sleep Mode, go to the Settings screen and navigate to the Sleep menu using the Down button. Press the Center button.

Use the Right and Left buttons to select a lower or higher time period, which can be intervals from 2 minutes to never. Press the Center button to accept. This will return you to the Settings screen.



Settings screen



Adjust volume



Adjust sleep

## EV3 Brick Interface

### Bluetooth

This is where Bluetooth is enabled on the EV3 Brick, and where you can choose some specific privacy and Apple iOS settings. Here you can also connect to other Bluetooth devices such as another EV3 Brick.

When you select Bluetooth on the Settings page, there are four options presented—Connections, Visibility, Bluetooth, and iPhone/iPad/iPod. To go back to the main Settings screen, press the Down button until the check mark at the bottom of the screen is highlighted, then press the Center button for OK.

### Bluetooth

It is here that you enable standard Bluetooth on the EV3 Brick. Using the Up and Down buttons, select the word “Bluetooth,” then press the Center button for OK. A check mark will appear in the Bluetooth box. Bluetooth is now enabled on your EV3 Brick, and a Bluetooth icon will be shown in the top left of the EV3 Brick Display.

**Note:** To connect to an iOS device, you will also need to select the iPhone/iPad/iPod setting (see below). For all other devices, including EV3 Bricks and Android devices, make sure that the iPhone/iPad/iPod setting is unchecked.

To disable Bluetooth, repeat the above procedure, this time unchecking the Bluetooth box.

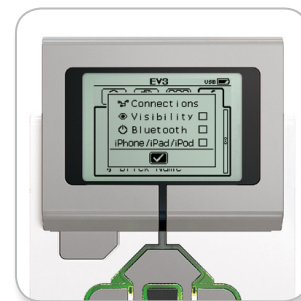
### iPhone/iPad/iPod

Select this setting if you want to connect your EV3 Brick to Apple iOS devices—iPhones, iPads, and iPods—using Bluetooth (make sure Bluetooth is enabled on your iOS device). This setting must also be enabled when connecting to the EV3 Programmer App on an iPad.

**Note:** Using this setting will prevent your EV3 Brick from connecting to other non-iOS Bluetooth devices, including computers, Android devices, and other EV3 Bricks!

You cannot enable both standard Bluetooth and Bluetooth communication for iOS devices at the same time.

To enable and disable Bluetooth communication for iOS devices, use the Up and Down buttons to select “iPhone/iPad/iPod” and then press the Center button for OK. A Bluetooth icon will be shown in the top left of the EV3 Brick Display.



Enable Bluetooth

### NOTE:

Your EV3 Brick will run more efficiently if you disable the Bluetooth setting when it is not in use.

## EV3 Brick Interface

### Connections

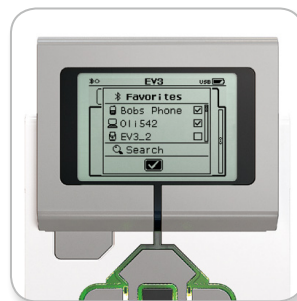
This option allows you to discover and choose other available Bluetooth devices (make sure Bluetooth is enabled). If you click on “Connections,” you will be taken to a Favorites screen, where the devices you trust are displayed and identified with a check mark. No passkeys are needed for your trusted devices. Using the check boxes, you can manage which devices you wish to have as Favorites.

If you then click on “Search,” the EV3 Brick will scan the area for all detectable Bluetooth-emitting devices—including other EV3 Bricks. Your favorite devices will be shown with an asterisk “\*” symbol.

Use the Up and Down buttons to select the device on the list you wish to connect to. Press the Center button for OK. If you choose to connect to a device not yet marked as a Favorite, you will be asked to enter the passkey to establish the connection. Once the other device verifies the passkey, you are automatically connected to the device.

### Visibility

If the Visibility setting is selected, other Bluetooth devices (including other EV3 Bricks) will be able to discover and connect to your EV3 Brick. If Visibility is unchecked, the EV3 Brick will not respond to search commands from other Bluetooth devices.



Favorites list



Device list

# EV3 TECHNOLOGY

## EV3 Brick Interface

### Wi-Fi

This is where you enable Wi-Fi communication on the EV3 Brick and connect to a wireless network. After selecting Wi-Fi on the Settings screen, use the Up and Down buttons to select the word “WiFi” and press the Center button for OK. A check mark will appear in the WiFi box. Wi-Fi is now enabled on your EV3 Brick, and a Wi-Fi icon will be shown in the top left of the EV3 Brick Display.

To go back to the main Settings screen, press the Down button until the check mark at the bottom of the screen is highlighted, then press the Center button for OK.

For information on how to connect your EV3 Brick to a wireless network, see the **Connecting the EV3 Brick to Your Computer** section on page 20.

**Note:** Wi-Fi connectivity between the EV3 Programmer App and your EV3 Brick is not supported.

### Brick Name

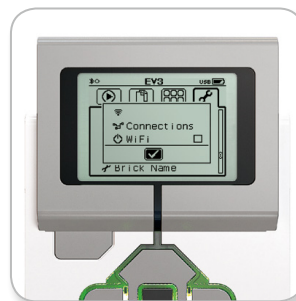
This menu allows you to view and change the name of your EV3 Brick. Go to the Settings screen and navigate to the Brick Name menu using the Down button. Press the Center button.

The current EV3 Brick name is displayed. To change it, use the Up, Down, Left, and Right brick buttons to enter the new name. Finally, highlight the Enter key on the display keyboard and press the Center button to save the new EV3 Brick name.

**Note:** The Brick Name feature requires firmware V1.07 or above. You can find out more about updating your firmware on page 54.

### Brick Info

When you need to know the current technical specifications of your EV3 Brick, such as hardware and firmware version and EV3 Brick OS build, this is where you will find that information. This is also where you can find out how much free memory you have available.



Enable Wi-Fi



Brick Name



Brick Info

# EV3 SOFTWARE

While building robots is fun, the heart of robotics is bringing them to life—making them move and accomplish tasks. You will find the LEGO® MINDSTORMS® EV3 Software to be an easy, intuitive, and icon-based programming interface.

## Installing the Software

Once you have confirmed that your computer meets the minimum system requirements, you are ready to install the software. Close all other programs, then double-click on the installation file in the EV3 Software application folder. Installation will now begin.

### Minimum System Requirements

#### Operating Systems:

- + **Windows:** Windows Vista (32/64 bit) with latest service packs or later versions of Windows
- + **Macintosh:** Mac OS X v10.6 with latest service packs or later versions of Mac OS

#### System Requirements:

- + Dual core processor 2.0 GHz or better
  - + 2 GB of RAM or more
- + 2 GB of available hard disk space
  - + XGA display (1024 x 768)
  - + 1 available USB port

LEGO® MINDSTORMS® EV3 does not support certain netbooks with hardware that does not meet the above requirements.

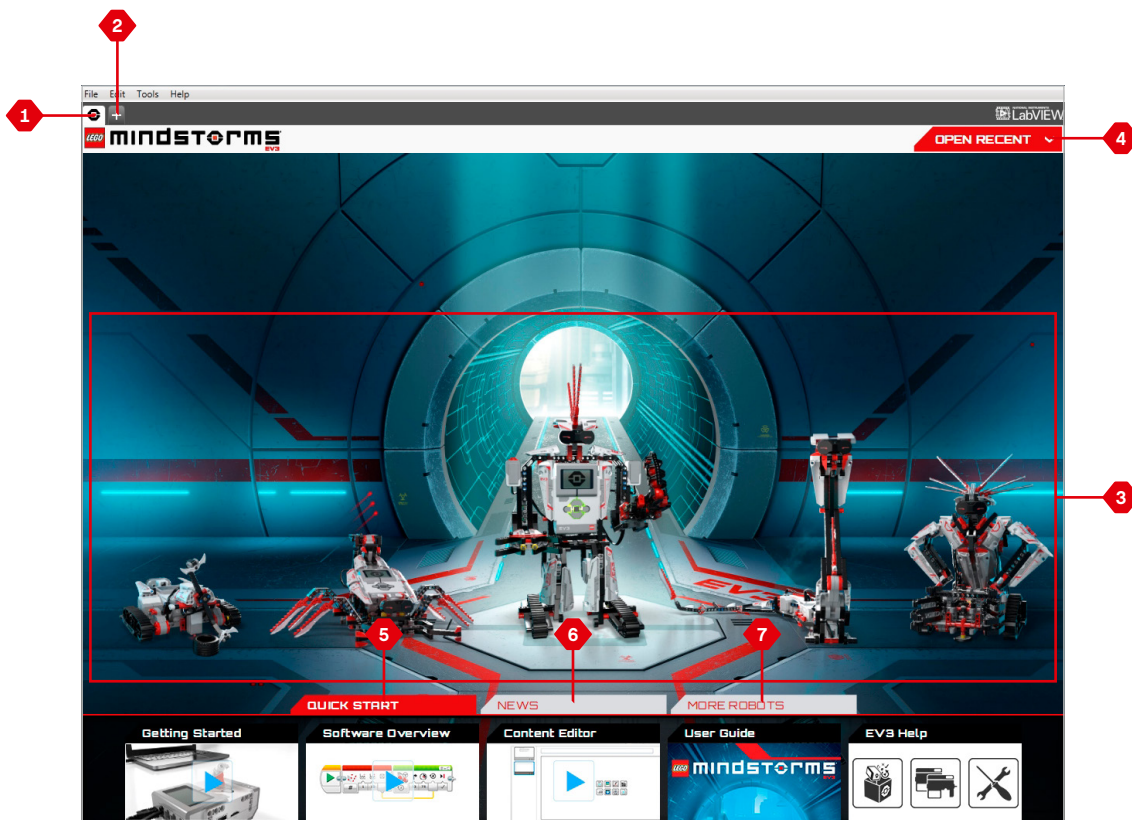
# EV3 SOFTWARE

## Lobby

Every time you open the EV3 Software, you will automatically start out in the Lobby area. The Lobby makes it easy to locate and work with the software and gives you access to everything you need.

In the Lobby you will find the following options and resources:

1. **Lobby Tab**—This button always returns you to the Lobby.
2. **Add Project**—Here you add a new project so that you can start programming your own robot.
3. **Robot Missions**—Here you can get started with building and programming the five main models.
4. **Open Recent**—Get easy access to the latest projects you have worked with.
5. **Quick Start**—Support resources such as short introduction videos, EV3 User Guide, and Software Help.
6. **News**—Small stories and news splashes from [LEGO.com/mindstorms](http://LEGO.com/mindstorms) (Internet connection is required).
7. **More Robots**—Access to building and programming more models (Internet connection is required).



Lobby overview

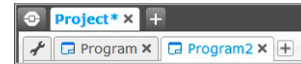
## Project Properties and Structure

When you open a new program, it will automatically create a project folder file. All programs, images, sounds, videos, instructions, and other assets that are used within a project will automatically be stored in this project folder. This makes it easy to store your project and share it with others.

Each project will be displayed in the form of a tab at the top of the screen. Underneath, you will see tabs for the programs that belong to the selected project. You can add a new project or program by clicking on the + button to the right of the other tabs. Clicking on an X will close the tab.

### Project Properties Page

If you click on the tab with the wrench to the far left of the program tabs, you will be taken to the Project Properties page. This page gives you an orderly display of the project that is currently selected, including all programs, images, sound, and other assets. Here you can describe your project with text, images, and video that will determine how the project shows up in the Lobby.

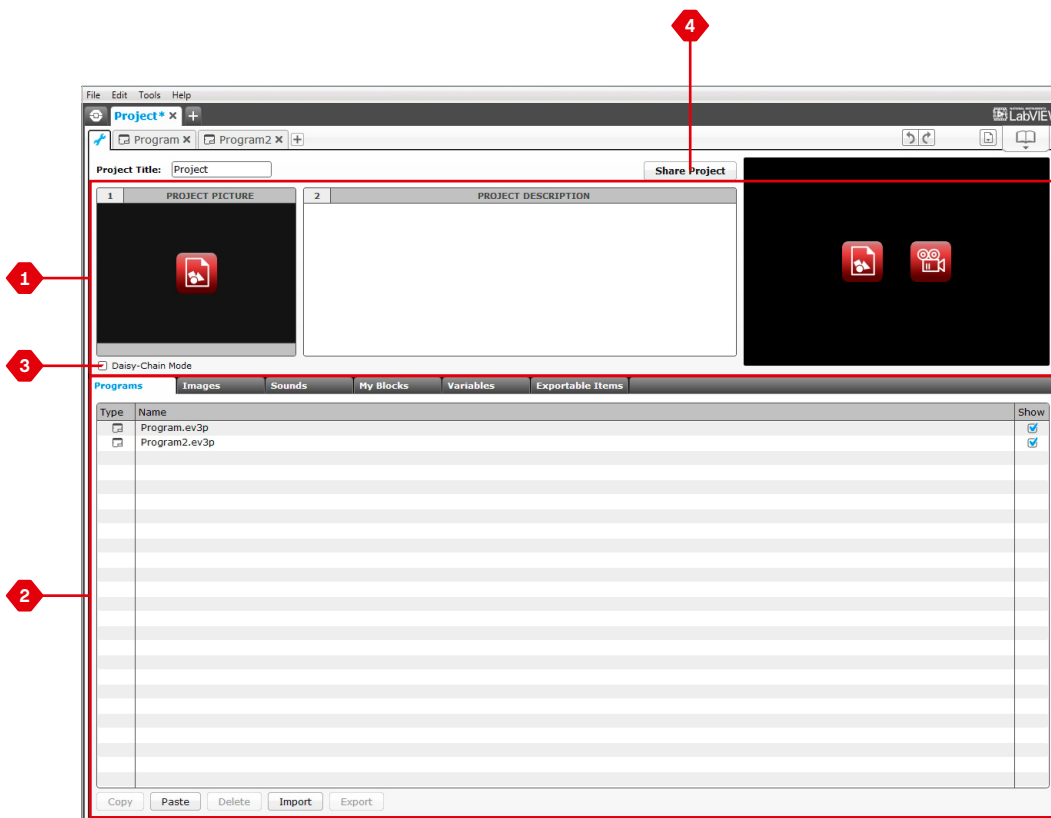


Project and Program tabs

## Project Properties and Structure

Project Properties displayed include:

1. **Project Description**—Give your project a title, describe it, and insert any images and video you would like to appear in the Lobby when the project is previewed.
2. **Project Content Overview**—Here you will find all assets included in the project: for example, programs, images, sounds, and My Blocks.
3. **Daisy Chain Mode**—This check box enables the Daisy Chain Mode, so you can program up to four connected EV3 Bricks.
4. **Share**—Here you can easily share your project on [LEGO.com/mindstorms](http://LEGO.com/mindstorms) (Internet connection is required).



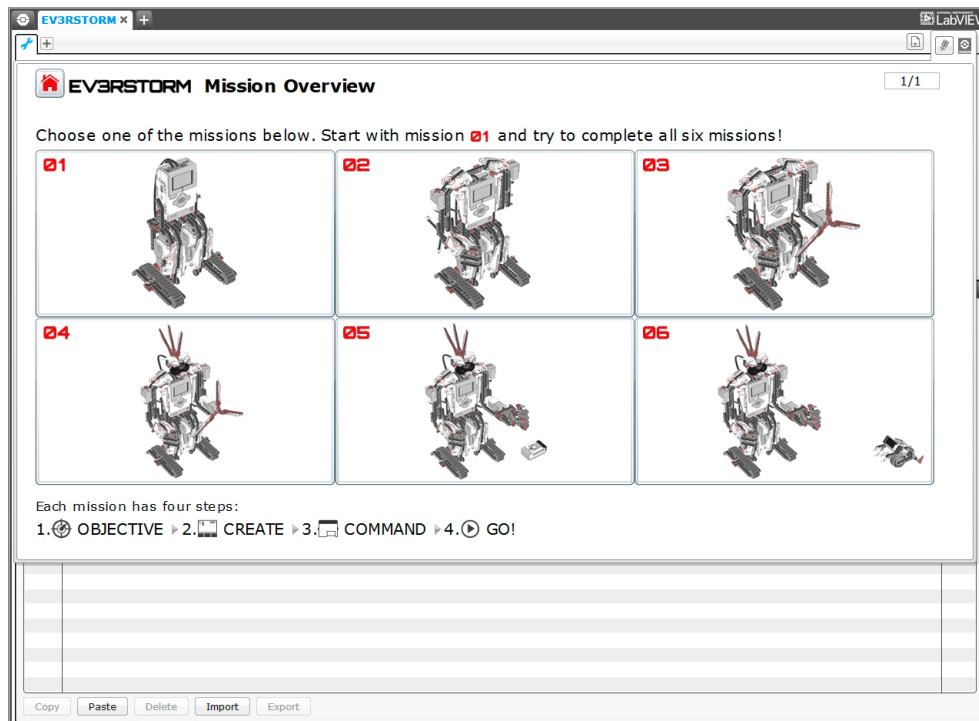
Project Properties page

## Robot Missions

In the EV3 Software Lobby area, five cool robots are featured: TRACK3R, SPIK3R, EV3RSTORM, R3PTAR, and GRIPP3R. These robots have been created by LEGO® designers to demonstrate some of the ways you can build and program with LEGO MINDSTORMS® EV3. Click on any of the robots and you will be taken to the Mission Overview of that particular robot. Missions are designed to take you through the essentials of programming and getting to know the EV3 hardware and building system.

Each Mission helps you build and program a part of the robot. You start with the first Mission and then move on to the next once it is completed. When you have completed all the Missions, the robot is built and ready to receive your commands. All Missions are structured in four steps:

- + Objective
- + Create
- + Command
- + Go!



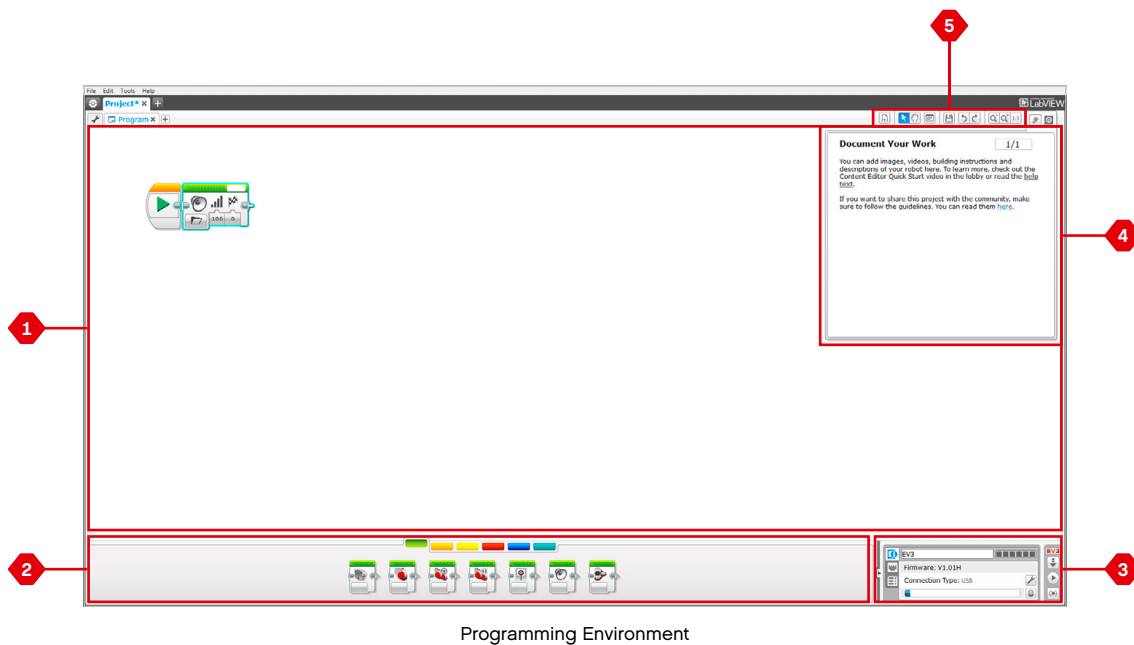
Robot Missions

## Programming

Program your robot in the intuitive icon-based Programming Environment. Drag and drop the actions that you want into the programming window and adjust them to suit your robot's behavior.

The EV3 Programming Environment consists of the following main areas:

1. **Programming Canvas**—Lay out your program here.
2. **Programming Palettes**—Find the building blocks for your program here.
3. **Hardware Page**—Establish and manage your communication with the EV3 Brick here and see what motors and sensors are connected where. This is also where you download programs to the EV3 Brick.
4. **Content Editor**—A digital workbook integrated into the software. Get instructions or document your project using text, images, and videos.
5. **Programming Toolbar**—Find basic tools for working with your program here.



## Programming Blocks and Palettes

All the programming blocks that are used for controlling your robot are located in Programming Palettes at the bottom of the Programming interface underneath the Programming Canvas. The Programming blocks are divided into categories according to type and nature, making it easy to find the block you need.

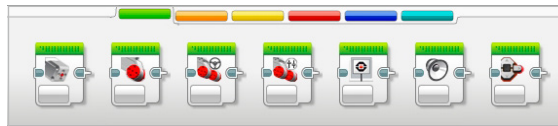
To learn more about the EV3 Programming interface and see how you can get started with your first program, see the **Getting Started** and **Software Overview** videos in the Quick Start section of the Lobby.

You can also find more information about how to program in the EV3 Software Help.

### Action Blocks

*(In order from left to right)*

- + Medium Motor
- + Large Motor
- + Move Steering
- + Move Tank
- + Display
- + Sound
- + Brick Status Light



### Flow Blocks

*(In order from left to right)*

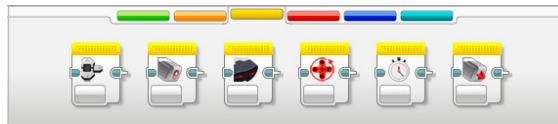
- + Start
- + Wait
- + Loop
- + Switch
- + Loop Interrupt



### Sensor Blocks

*(In order from left to right)*

- + Brick Buttons
- + Color Sensor
- + Infrared Sensor
- + Motor Rotation
- + Timer
- + Touch Sensor



## Programming Blocks and Palettes

### Data Blocks

(In order from left to right)

- + Variable
- + Constant
- + Array Operations
- + Logic Operations
- + Math
- + Round
- + Compare
- + Range
- + Text
- + Random



### Advanced Blocks

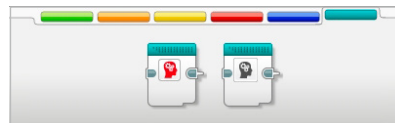
(In order from left to right)

- + File Access
- + Messaging
- + Bluetooth Connection
- + Keep Awake
- + Raw Sensor Value
- + Unregulated Motor
- + Invert Motor
- + Stop Program



### My Blocks

When you are repeatedly using the same segment of a program in many programs, that is a good time to create a My Block. Once your My Block is created, you can simply insert that single block into future programs within the same project.



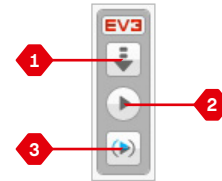
## Hardware Page

The Hardware Page provides a range of information about your EV3 Brick. It is always located in the lower right-hand corner when working with programs and can be collapsed when needed using the Expand/Collapse tab. Even when collapsed, the Hardware Page Controller will be visible, allowing you to download your program or experiment.

**The different Hardware Page Controller buttons have the following functionality:**

1. **Download**—Downloads the program to the EV3 Brick.
2. **Download and Run**—Downloads the program to the EV3 Brick and runs it immediately.
3. **Download and Run Selected**—Downloads only the highlighted blocks to the EV3 Brick and runs them immediately.

The EV3 text in the small window at the top will turn red when an EV3 Brick is connected to your computer.



Hardware Page Controller

# EV3 SOFTWARE

## Hardware Page

### Brick Information

The Brick Information tab displays important information about the EV3 Brick that is currently connected, such as EV3 Brick name, battery level, firmware version, connection type, and memory bar. It also gives you access to the Memory Browser and Wireless Setup tools.

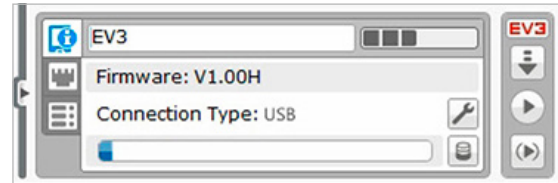
### Port View

The Port View tab displays information about the sensors and motors connected to the EV3 Brick. When your EV3 Brick is connected to the computer, this information is automatically identified and you will be able to see the live values. If your EV3 Brick is not connected, you can still set up the Port View tab manually. Select a port, then select the appropriate sensor or motor from the list.

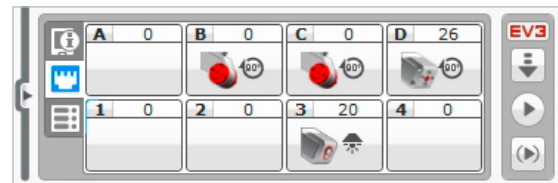
### Available Bricks

The Available Bricks tab shows the EV3 Bricks that are currently available for connection. You are able to choose which EV3 Brick you want to connect to and the type of communication. Also, you can disconnect an existing EV3 Brick connection.

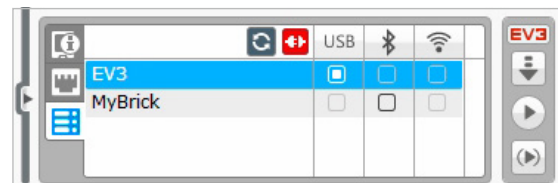
You can find more information about how to use the Hardware Page in the EV3 Software Help.



Brick Information tab



Port View tab



Available Bricks tab

## Content Editor

The Content Editor offers a convenient way for users to document the purpose, process, and analysis of their projects. You can include text, images, videos, sound effects, and even building instructions. Content Editor is also the place where already-made content—for example, the Robot Missions—are displayed and used.

Each page can be customized with different layouts and can automatically perform a range of actions, such as opening specific programs or highlighting a particular programming block.

The Content Editor is located in the top right corner of the EV3 Software and is available whenever you are working on a project. You open the Content Editor using the large button with the book icon. Once the Content Editor is open, you will be able to see whatever content has been made for a project or program.

**The Content Editor consists of the following main areas and features:**

**1. Open/Close Content Editor**—Here you open and close the Content Editor.

**2. Edit/View Mode**—Allows you to view or edit your pages.

**3. Page Navigation**—Go to the next or previous page.

**4. Page Title**—Add a title to your page.

**5. Page Area**—This is where the main content is shown and edited.

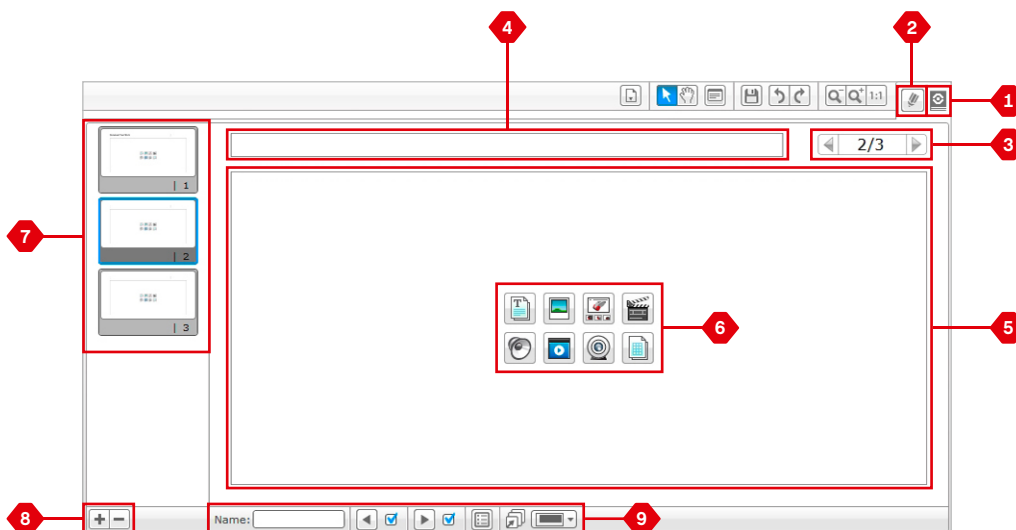
**6. Icons**—Select what content type you wish to add to the page area.

**7. Page Thumbnails**—Go to a specific page using the thumbnail images.

**8. Add/Delete Page**—When adding a page, you get to choose from fourteen different templates.

**9. Page Setup**—Make special settings for each page, such as format, page action, and navigation to the next page.

You can find more information about how to use the Content Editor in the EV3 Software Help.



Content Editor

## Tools

In the top menu bar of the EV3 Software you will find a number of small Tools that can add extra functionality and support to your EV3 Software experience.

You can learn more about the Tools in the EV3 Software Help.

### Sound Editor

Create your own sound effects or customize one from our selection of official EV3 Sound files. The sounds can then be used for programming your robot by use of the Sound Programming Block.

### Image Editor

Make creative use of the EV3 Brick Display by designing original images or customizing existing images. The images can then be used for programming your robot by the use of the Display Programming Block.

### My Block Builder

Sometimes you make a great miniprogram that you want to use again in another project or program. My Block Builder helps you take this miniprogram and create a unique My Block where you define the name, icon, and parameters that are relevant for you. My Blocks will automatically be archived in the My Block Programming Palette.

### Firmware Update

Periodically, updated firmware will become available for your EV3 Brick. We recommend that you install new versions as they become available. This tool will tell you if there is a new firmware version available and help you update it on your EV3 Brick.

### Wireless Setup

In case you wish your EV3 Software to communicate with your EV3 Brick using Wi-Fi, this tool will help set up the wireless connection. To do so, you will need to acquire a Wi-Fi USB dongle for the EV3 Brick and enable Wi-Fi communication on the EV3 Brick.

### Block Import

Add new blocks to your Programming Palettes. This can be new LEGO® Programming Blocks or blocks developed by other manufacturers: for example, in relation to a third-party sensor. These Blocks first need to be downloaded to your computer—then you can import them into your EV3 Software using this tool.

# EV3 SOFTWARE

## Tools

### Memory Browser

It is easy to lose track of what you have stored on your EV3 Brick. The Memory Browser provides an overview of memory use on your EV3 Brick (including an SD card if you have it inserted). You can use the Memory Browser to transfer programs, sounds, graphics, and other files between your EV3 Brick and a computer, and copy and delete files that are already on your EV3 Brick.

### Download as App

Advanced users may enjoy the challenge of creating applications for generic tasks on the EV3 Brick. An EV3 Brick app is made as a normal EV3 program, but when downloaded to the EV3 Brick using this tool, it will show up as a new app in the Brick Apps screen, together with the default apps such as Brick Programming and Port View.

### Import Brick Program

This tool will enable you to import a program made in the Brick Program App on the EV3 Brick to the EV3 Software programming environment. Your program can then be further refined using the full functionality of the EV3 Software.

# EV3 PROGRAMMER APP

The LEGO® MINDSTORMS® Programmer App is a great way to learn all about R3PTAR, TRACK3R, EV3RSTORM, SPIK3R, and GRIPP3R, and program them from your tablet using a programming environment just like the one in the EV3 Software. You'll love taking on the challenging Robot Missions that we've created, and when you've mastered them you'll be able to create your very own programs to bring your own robots to life.

## Installing the Programmer App

Once you have confirmed that your tablet meets the minimum system requirements, open the App Store/Google Play on your device. Then search for the free app—LEGO MINDSTORMS EV3 Programmer—and install it.

### Minimum System Requirements

For a full list of supported devices and minimum system requirements go to:  
[www.LEGO.com/mindstormsapps](http://www.LEGO.com/mindstormsapps)

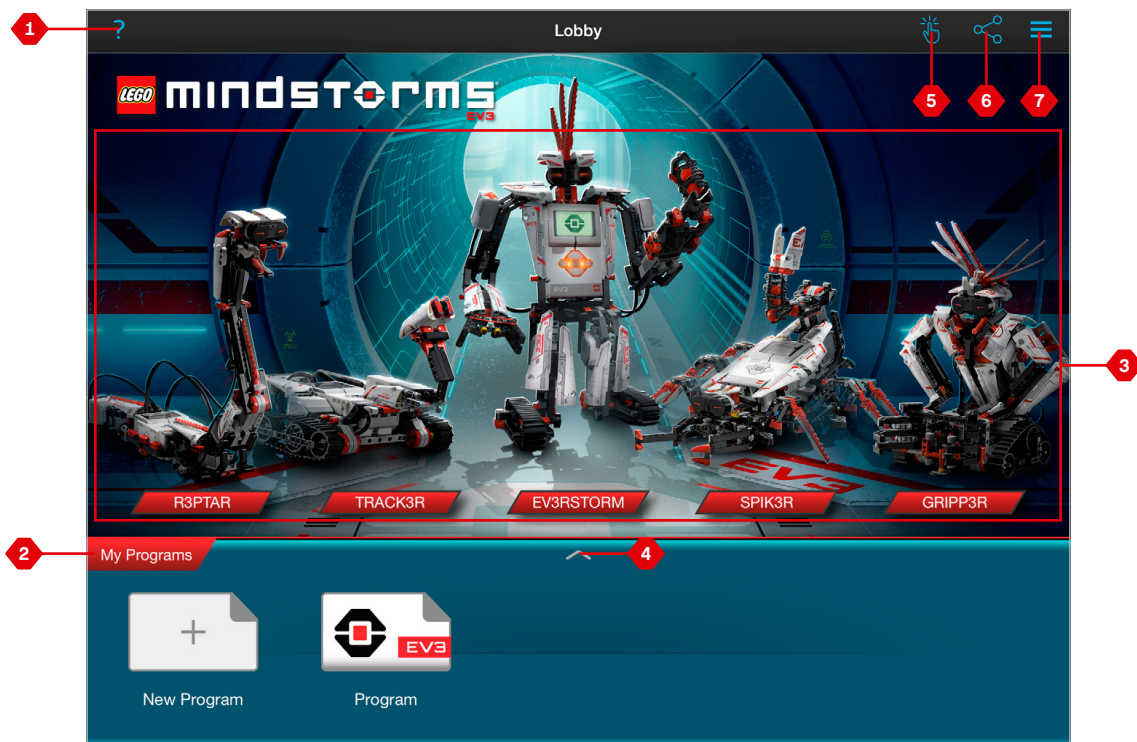
# EV3 PROGRAMMER APP

## Lobby

The Lobby is where you start each time you open the Programmer App. The Lobby makes it easy to create programs, open saved programs that you previously created, view the Robot Missions, and access other resources that will help you familiarize yourself with the Programmer App.

In the Lobby, you will find the following options and resources:

- 1. Help**—View an overlay highlighting the main components of the Lobby.
- 2. My Programs Tab**—Create a new program or load previously created programs. You can also delete and duplicate programs, as well as share them (see below for further details).  
*Note: Tap the program name to modify it.*
- 3. Robot Missions**—Tap each robot to access a series of challenging Missions.
- 4. Expand**—Increases the size of the lower pane to view more programs at once.
- 5. Select**—Select programs that you can then delete or duplicate.
- 6. Share**—Share your programs via compatible apps installed on your tablet, such as e-mail.  
*Note: Select “Desktop” if you want to export your program in a format that is compatible with the EV3 Software on your computer.*
- 7. Menu**—Tap this icon to view the following options:
  - + **Help**—View the Quick Start Video and EV3 User Guide.
  - + **Terms of Use**—View the LEGO Group Privacy Policy, Cookie Policy, Terms of Use, and Support Information.
  - + **Languages**—Choose the language that you would like the Programmer App to be displayed in.



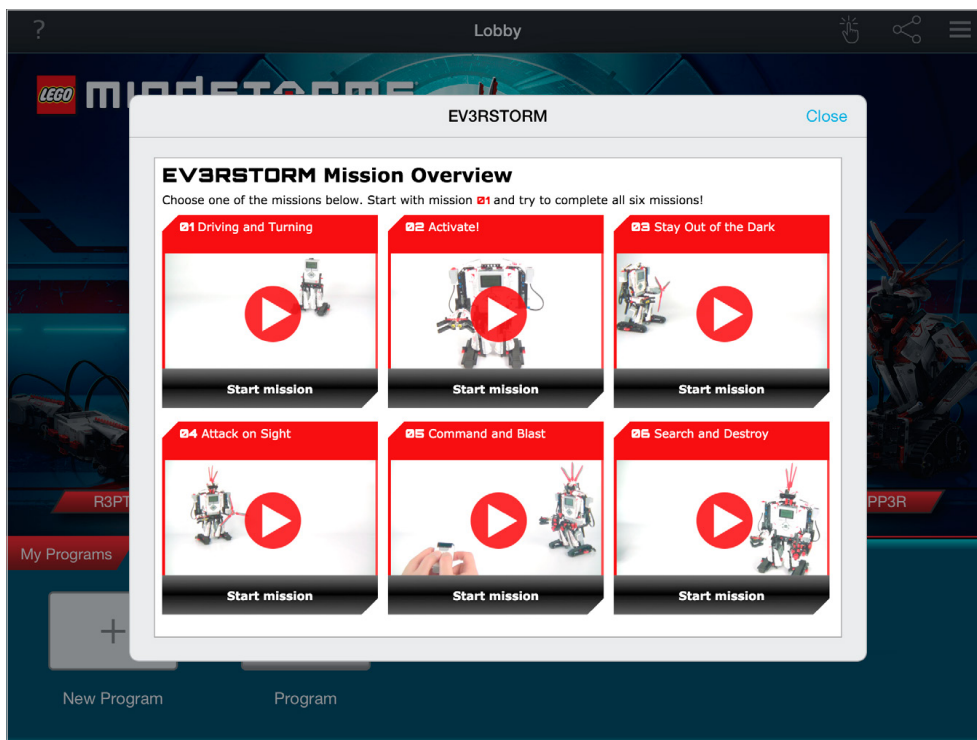
Lobby overview

# EV3 PROGRAMMER APP

## Robot Missions

In the Lobby, you'll see five cool robots: R3PTAR, TRACK3R, EV3RSTORM, SPIK3R and GRIPP3R. These robots have been created by LEGO® designers to demonstrate some of the ways you can build and program with LEGO MINDSTORMS® EV3. Tap each robot to access the Mission Overview, which shows you all the missions available for that particular robot. You can program R3PTAR to slither like a snake, SPIK3R to catch a bug, GRIPP3R to grab an object... you get the idea. Each mission includes a short video of the robot carrying out the mission, plus building instructions and a short mission description. We've also provided you with the finished program, which includes useful notes on how to modify the program and troubleshoot problems you might run into during the mission.

Each Robot Mission helps you build and program a part of the robot. That's why we suggest that you take on each of the challenges in sequence. When you've completed all the missions, your robot is complete and ready to carry out programs that you will now be able to create on the Programming Canvas.



Robot Missions

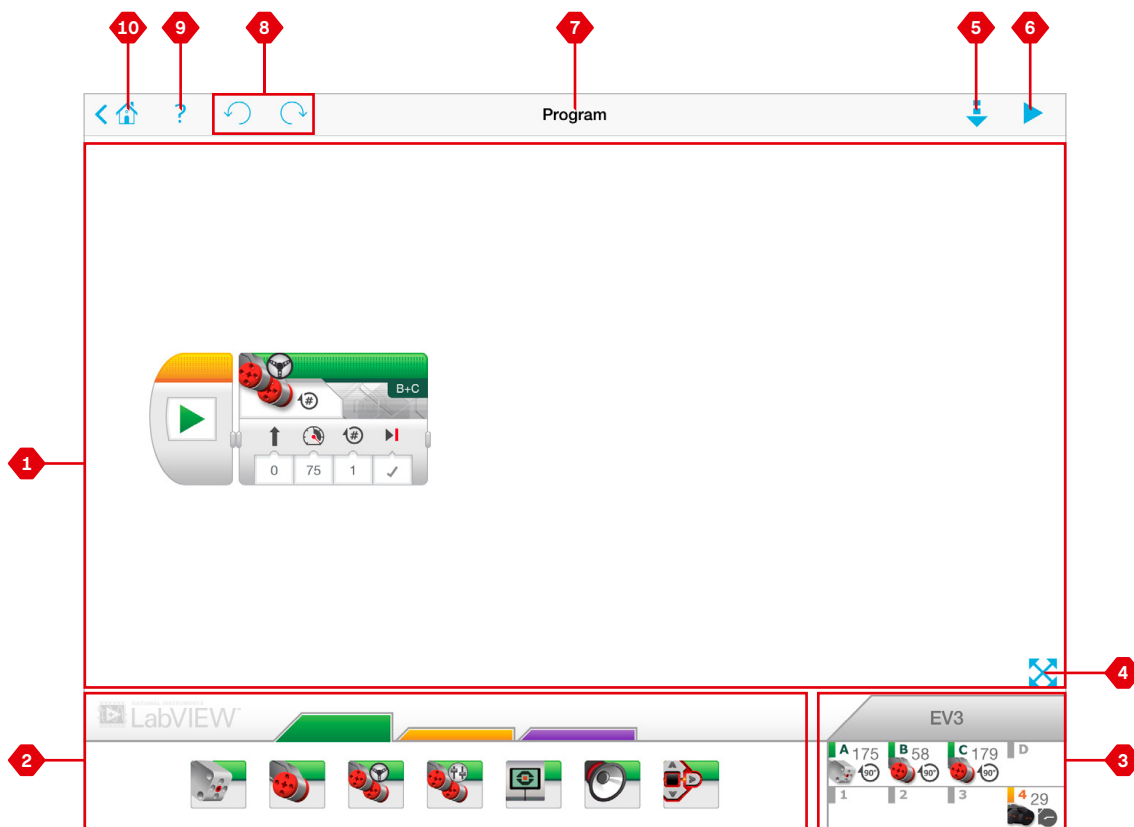
# EV3 PROGRAMMER APP

## Programming

Like the EV3 Software, the Programmer App has a graphical programming environment that's so easy to use, you'll be sending your robot around the room in no time.

The Programming Environment features the following main areas:

- 1. Programming Canvas**—Create your program here using the various programming blocks.
- 2. Programming Palettes**—Find the building blocks for your program here.
- 3. Port View**—View the sensors and motors connected to your EV3 Brick. Tap to open the Hardware Page and view more detailed information (see the **Hardware Page** section on page 52). Your EV3 Brick name is also shown above the Port View.
- 4. Resize and Center**—Resize the Programming Canvas to show all objects that you have placed on it.
- 5. Download**—Download the active program to your EV3 Brick. **Note:** This will only be displayed if your EV3 Brick is connected.
- 6. Run**—Download the active program to your EV3 Brick and run it. **Note:** The time taken to download a program will depend on the number of images and sounds it includes.
- 7. Program Name**—Shows the name of the currently open program.
- 8. Undo/Redo**—Undo or redo the last change you made to the program.
- 9. Help**—View a series of pages showing the main parts of the Programming Environment, and how to manipulate programming blocks on the Programming Canvas.
- 10. Lobby**—Return to the Lobby.



Programming Environment

# EV3 PROGRAMMER APP

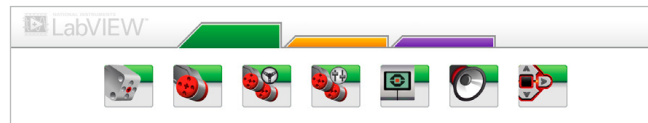
## Programming Blocks and Palettes

Programming blocks are your way of telling your robot what you want it to do. Located in the Programming Palettes area below the Programming Canvas, the blocks are divided into categories according to their type and nature to make it easy to find the block you need.

### Action Blocks

*(In order from left to right)*

- + Medium Motor
- + Large Motor
- + Move Steering
- + Move Tank
- + Display
- + Sound
- + Brick Status Light



### Flow Blocks

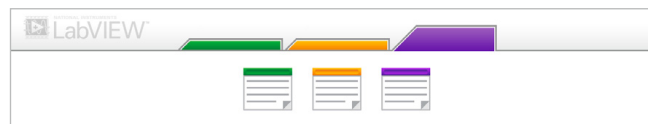
*(In order from left to right)*

- + Start
- + Wait
- + Loop
- + Switch



### Comment Boxes

When you create a program, it can be helpful to add Comment Boxes to describe what your program does. Use green Comment Boxes for Action Blocks, orange for Flow Block comments, and purple for general comments about the program. For some good examples, check out the comments that we've added for you in the various Robot Missions.



# EV3 PROGRAMMER APP

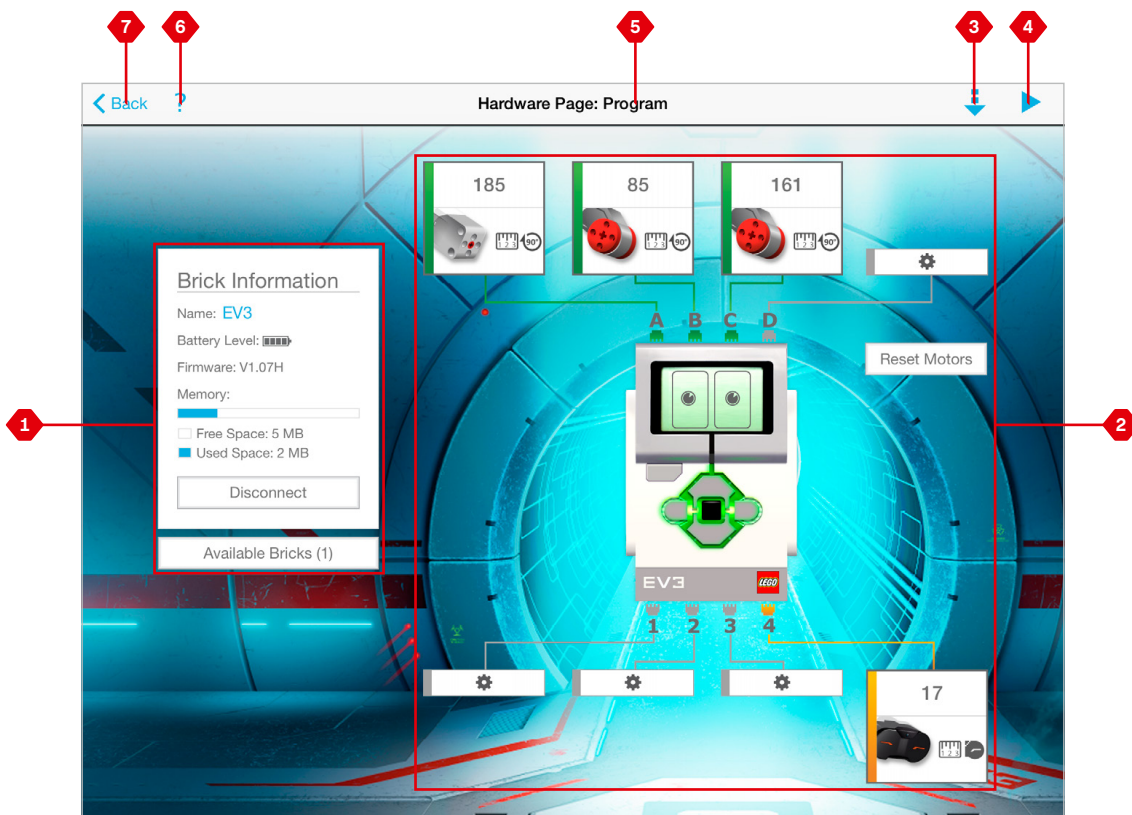
## Hardware Page

Tap anywhere in the Port View (visible from the Programming Environment) to display the Hardware Page.

The Hardware Page consists of the following main areas:

- 1. Brick Information**—This area shows lots of information about the currently connected EV3 Brick, including the brick name, battery level, firmware version, and free/used memory space. Here you can also rename your EV3 Brick, disconnect it, and connect to other available EV3 Bricks.
- 2. Brick Port Information**—Here you can see which sensors and motors are connected to your EV3 Brick's ports. Tap a sensor to change its mode or tap a motor to change the displayed value, including current speed, rotations, and degrees turned. Here you can also reset any attached motors.

- 3. Download**—Download the active program to your EV3 Brick.  
*Note: This will only be displayed if your EV3 Brick is connected.*
- 4. Run**—Download the active program to your EV3 Brick and run it.  
*Note: The time taken to download a program will depend on the number of images and sounds it includes.*
- 5. Program Name**—Shows the name of the currently open program.
- 6. Help**—View an overlay showing the main components of the Hardware Page.
- 7. Back**—Return to the Programming Environment.



Hardware Page

# TROUBLE- SHOOTING

## Updating the EV3 Software

Under the Help menu in the EV3 Software, click **Check for Software Updates** to check for the latest version of the EV3 Software (Internet connection required). If an update is available and you choose to install it, you will be taken to a website where you can download the update to your local drive.

To install the update, ensure that you first close the EV3 Software and then run the downloaded update file.

You can also have the EV3 Software check for updates every time you launch it by clicking the “Automatically check for software updates” checkbox.

# TROUBLE-SHOOTING

## Firmware Update

Firmware is the software that is inside the EV3 Brick. Without its firmware, the EV3 Brick will not work. Occasionally, the LEGO Group may release new versions of the firmware that add enhanced functions or fix software bugs.

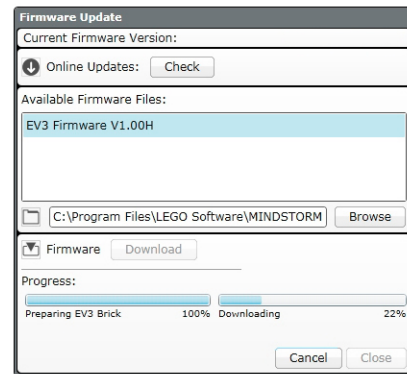
To update the firmware, you need a USB connection from your computer to your EV3 Brick. Your computer must also be connected to the Internet.

1. Turn your EV3 Brick on and connect it to your computer.
2. Select Firmware Update in the Tools menu.
3. Click the Check button to see if new firmware updates are available.
4. Select the most recent firmware version from the Available firmware files.
5. If you want to use a firmware version located on your computer instead, use the Browse button to find and select the correct firmware file.
6. Click the Download button to download the new firmware to your EV3 Brick. The progress bars at the bottom of the Firmware Update dialog box will show you how the firmware update is proceeding. Once complete, your EV3 Brick will restart itself.

If for some reason your EV3 Brick stops working during the firmware update process, you will need to manually update the firmware by doing the following (the EV3 Brick still needs a USB connection to your computer):

1. Hold down the **Back**, **Center**, and **Right** buttons on the EV3 Brick.
2. When the EV3 Brick restarts, release the **Back** button.
3. When the screen says "Updating," release the **Center** and **Right** buttons and click the Download button in the Firmware Update tool. The firmware will be downloaded to your EV3 Brick, which will restart itself.

If the manual firmware update does not make your EV3 Brick work the first time, repeat the manual update process.



Firmware Update tool

### NOTE:

Firmware updates are not supported in the EV3 Programmer App and must be carried out via the EV3 Software.

### NOTE:

Updating firmware will delete all existing files and projects in the EV3 Brick memory!

### NOTE:

Check your EV3 Brick batteries before repeating manual firmware updates. The problem may simply be due to worn-down batteries!

# TROUBLE- SHOOTING

## Resetting the EV3 Brick

If your EV3 Brick suddenly stops working and cannot be shut down through the normal process, you will need to reset your EV3 Brick. Resetting the EV3 Brick does not delete existing files and projects from previous sessions in the EV3 Brick memory. Files and projects from the existing session will be lost.

1. Make sure that the EV3 Brick is turned on.
2. Hold down the **Back**, **Center**, and **Left** buttons on the EV3 Brick.
3. When the screen goes blank, release the **Back** button.
4. When the screen says "Starting," release the **Center** and **Left** buttons.



### **NOTE:**

Check your EV3 Brick batteries before reinstalling firmware. Problems may simply be due to worn-down batteries!

# USEFUL INFORMATION

## Sound File List

### Animals



Cat purr



Dog whine



Snake hiss



Dog bark 1



Elephant call



Snake rattle



Dog bark 2



Insect buzz 1



T-rex roar



Dog growl



Insect buzz 2



Dog sniff



Insect chirp

### Colors



Black



White



Blue



Yellow



Brown



Green



Red

# USEFUL INFORMATION

## Sound File List

### Communication



Bravo



Goodbye



Okay



EV3



Hello



Okey-dokey



Fantastic



Hi



Sorry



Game over



LEGO



Thank you



Go



MINDSTORMS



Yes



Good job



Morning



Good



No

### Expressions



Boing



Kung fu



Smack



Boo



Laughing 1



Sneezing



Cheering



Laughing 2



Snoring



Crunching



Magic wand



Uh-oh



Crying



Ouch



Fanfare



Shouting

# USEFUL INFORMATION

## Sound File List

### Information



Activate



Error



Start



Analyze



Flashing



Stop



Backwards



Forward



Touch



Color



Left



Turn



Detected



Object



Up



Down



Right



Error alarm



Searching

### Mechanical



Air release



Blip 4



Motor stop



Airbrake



Horn 1



Ratchet



Backing alert



Horn 2



Sonar



Blip 1



Laser



Tick tack



Blip 2



Motor idle



Walk



Blip 3



Motor start

# USEFUL INFORMATION

## Sound File List

### Movements



Arm 1



Servo 1



Speed down



Arm 2



Servo 2



Speed idle



Arm 3



Servo 3



Speed up



Arm 4



Servo 4



Speeding



Drop load



Slide load



Lift load



Snap

### Numbers



Eight



One



Three



Five



Seven



Two



Four



Six



Zero



Nine



Ten

# USEFUL INFORMATION

## Sound File List

### System



Click



Overpower



Confirm



Power down



Connect



Ready



Download



Start up



General alert

## Image File List

### Expressions



Big smile



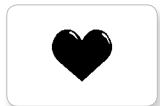
Sad



Heart large



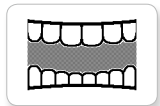
Sick



Heart small



Smile



Mouth 1 open



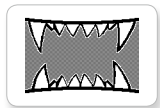
Swearing



Mouth 1 shut



Talking



Mouth 2 open



Wink



Mouth 2 shut

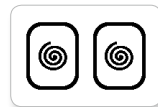


ZZZ

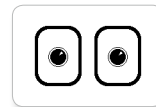
### Eyes



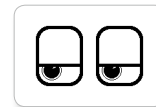
Angry



Dizzy



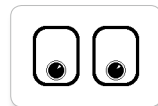
Neutral



Tired left



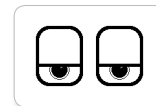
Awake



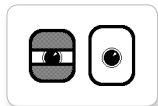
Down



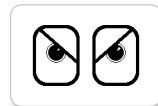
Nuclear



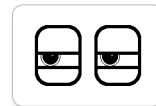
Tired middle



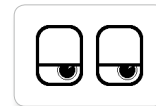
Black eye



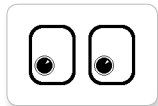
Evil



Pinch left



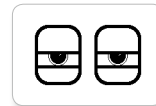
Tired right



Bottom left



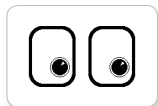
Hurt



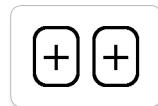
Pinch middle



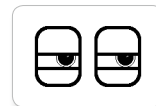
Toxic



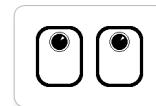
Bottom right



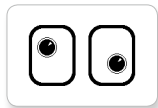
Knocked out



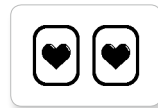
Pinch right



Up



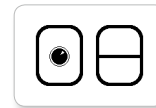
Crazy 1



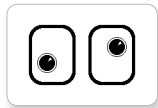
Love



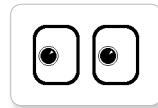
Sleeping



Winking



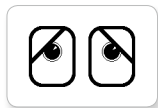
Crazy 2



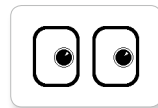
Middle left



Tear



Disappointed



Middle right

# USEFUL INFORMATION

## Image File List

### INFORMATION



Accept



No go



Thumbs down



Backward



Question mark



Thumbs up



Decline



Right



Warning



Forward



Stop 1

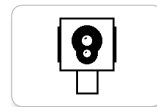


Left

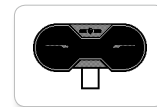


Stop 2

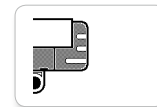
### LEGO



Color sensor



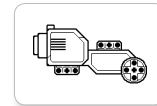
IR sensor



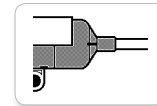
Sound sensor



EV3 icon



Large motor



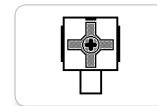
Temp. sensor



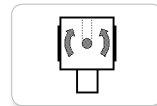
EV3



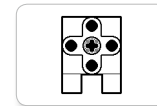
LEGO



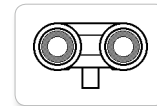
Touch sensor



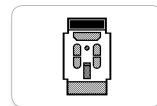
Gyro sensor



Medium motor



US sensor



IR beacon



MINDSTORMS

# USEFUL INFORMATION

## Image File List

### Objects



Bomb



Lightning



Boom



Night



Fire



Pirate



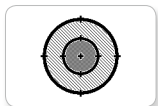
Flowers



Snow



Forest



Target

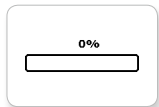


Light off

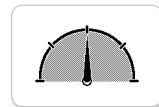


Light on

### Progress



Bar 0



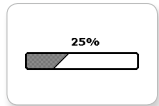
Dial 2



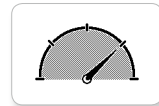
Hourglass 0



Timer 4



Bar 1



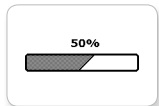
Dial 3



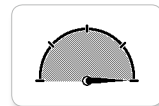
Hourglass 1



Water level 0



Bar 2



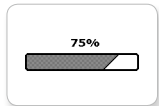
Dial 4



Hourglass 2



Water level 1



Bar 3



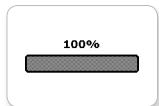
Dots 0



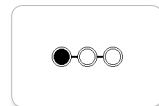
Timer 0



Water level 2



Bar 4



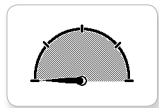
Dots 1



Timer 1



Water level 3



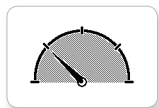
Dial 0



Dots 2



Timer 2



Dial 1



Dots 3



Timer 3

# USEFUL INFORMATION

## Image File List

### System



Accept 1



Dot empty



Slider 0



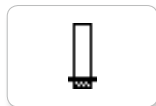
Slider 6



Accept 2



Dot full



Slider 1



Slider 7



Alert



EV3 small



Slider 2



Slider 8



Box



Busy 0



Slider 3



Decline 1



Busy 1



Slider 4



Decline 2



Play



Slider 5

# USEFUL INFORMATION

## Brick Program App—Assets List

### Sounds



1. Hello



7. Object



2. Goodbye



8. Ouch



3. Fanfare



9. Blip 3



4. Error alarm



10. Arm 1



5. Start



11. Snap

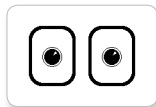


6. Stop



12. Laser

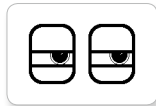
### Images



1. Neutral



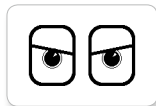
7. Question mark



2. Pinch right



8. Warning



3. Awake



9. Stop 1



4. Hurt



10. Pirate



5. Accept



11. Boom



6. Decline



12. EV3 icon

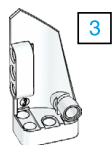
# USEFUL INFORMATION

## Element List



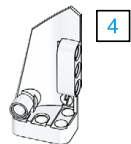
6

3x  
4558797



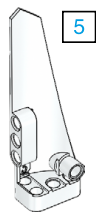
3

3x  
4547581



4

3x  
4547582



5

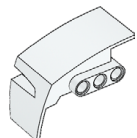
3x  
4558802



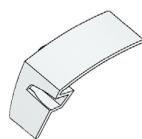
4x  
4656205



4x  
4173941



1x  
6015596



1x  
6015597



4x  
4514554



3x  
4666999



1x  
4565452



1x  
6031962



1x  
4544143



4x  
4189936



8x  
4188298



2x  
4128594



14x  
4175442



17x  
4128598



4x  
4173975



3x  
4545430



6x  
4185661



4x  
4254606



6x  
4234429



9x  
4227155



1x  
4189131



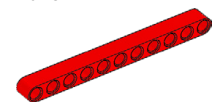
10x  
4140806



12x  
4142865

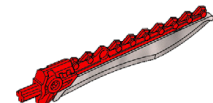


3x  
4513174



11

4x  
4562805



6x  
4657296



28x  
4206482



38x  
4514553



11x  
4239601



4x  
6031821

# USEFUL INFORMATION

2x  
4246901

3x  
6028041

4x  
4299389

4x  
4184286

4x  
4248204

2x  
4177431

4x  
4177430

5x  
4255563

2x  
4143187



2x  
6044688

4x  
4552347

8x  
4120017

6x  
4142823

4x  
4128593

12x  
4140327

12x  
4111998

10x  
6006140

12x  
4142822

10x  
4142135

6x  
4495935

8x  
4645732

4x  
4522933

4x  
4542573

9x  
370626

2x  
4629921

4x  
4141300

6x  
4184169

95x  
4121715

1x  
4558692

1x  
6024109

1x  
6024106

5

7

9

13

15

6

# USEFUL INFORMATION



6x  
4560175



2x  
4538007



12x  
4225033



4x  
4211888



4x  
4211807



2x  
4211553



6x  
4211375



2x  
4526985



1x  
4211566



2x  
4630114



3x  
4494222



4x  
6013936



4x  
4211758



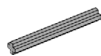
1x  
4502595



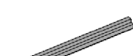
2x  
4211510



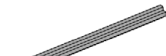
22x  
4211815



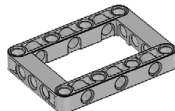
9x  
4211639



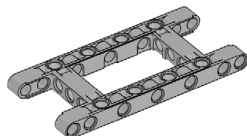
2x  
4211805



1x  
4535768



2x  
4539880



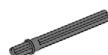
2x  
4540797



4x  
4560177



6x  
4499858

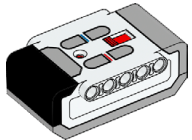


2x  
4508553

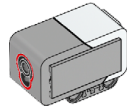


2x  
4514558

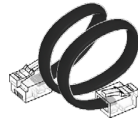
# USEFUL INFORMATION



1x  
6014051

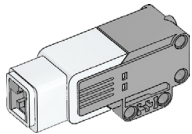


1x  
6008919

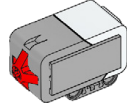


25 cm / 10 in.

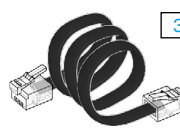
4x  
6024581



1x  
6008577

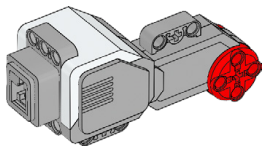


1x  
6008472

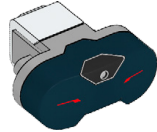


35 cm / 14 in.

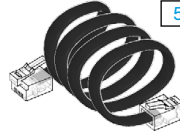
2x  
6024583



2x  
6009430

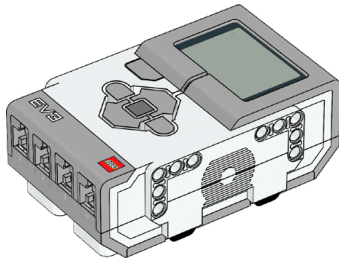


1x  
6009811

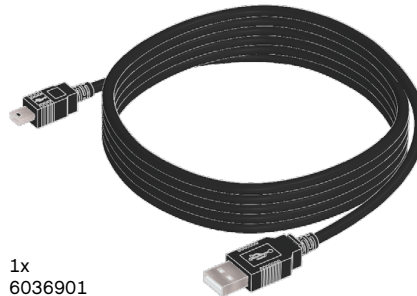


50 cm / 20 in.

1x  
6024585



1x  
6009996



1x  
6036901

Made for

iPod iPhone iPad

iPad, iPhone and iPod touch are trademarks of Apple Inc., registered in the U.S. and other countries.